
Personal Checklist of United States Coins

Compliments of



Littleton
Coin Company



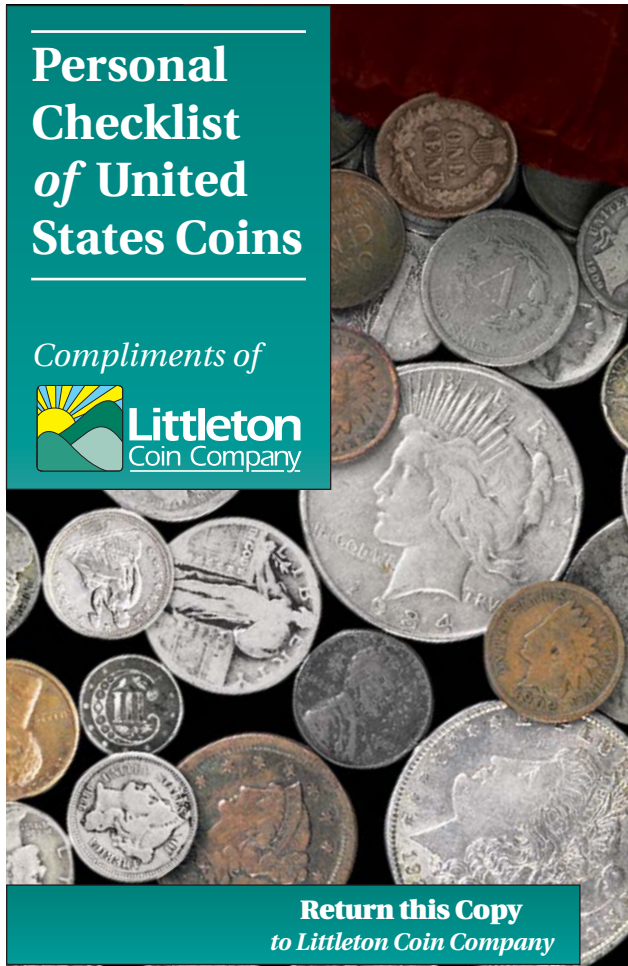
Keep this Copy
for your records

Personal Checklist of United States Coins

Compliments of



Littleton
Coin Company



Return this Copy
to Littleton Coin Company

HELP US TO HELP YOU

Here's your handy, pocket-sized Personal Checklist of United States Coins to help you keep track of your collection, and help us serve you better. It has been designed to provide two copies of your collection.

One copy, marked **KEEP THIS COPY**, is for you to keep as a pocket-size guide to your collection. Take it with you and you'll always know which coins you own!

The other, marked **RETURN THIS COPY**, should be returned to Littleton Coin. With this confidential checklist, we'll know which coins you're interested in, and we won't send you duplicates of coins you already have. Simply follow the 2 easy steps below and you'll receive just the coins you want... no duplicates!

1. Complete both copies of your Personal Checklist of U.S. Coins. Draw a line through the dates of the coins you have in your collection.

Example (at right):

ROOSEVELT DIMES. This tells us that you have the 1946-D, 1946-S and 1947 dimes, but do not have the 1946, 1947-D and 1947-S dimes.

1946	1947
1946-D	1947-D
1946-S	1947-S

2. On the copy marked **RETURN THIS COPY** (indicated at bottom of front cover), completely fill in customer information on the back cover and return this portion of checklist at your earliest convenience. In the future, as you add to your collection please let us know of any new purchases, and we'll add them to your confidential list.

Please Note: some extremely scarce issues have been omitted from the checklist as these coins rarely if ever become available for sale.

HELP US TO HELP YOU

Here's your handy, pocket-sized Personal Checklist of United States Coins to help you keep track of your collection, and help us serve you better. It has been designed to provide two copies of your collection.

One copy, marked **KEEP THIS COPY**, is for you to keep as a pocket-size guide to your collection. Take it with you and you'll always know which coins you own!

The other, marked **RETURN THIS COPY**, should be returned to Littleton Coin. With this confidential checklist, we'll know which coins you're interested in, and we won't send you duplicates of coins you already have. Simply follow the 2 easy steps below and you'll receive just the coins you want... no duplicates!

1. Complete both copies of your Personal Checklist of U.S. Coins. Draw a line through the dates of the coins you have in your collection.

Example (at right):

ROOSEVELT DIMES. This tells us that you have the 1946-D, 1946-S and 1947 dimes, but do not have the 1946, 1947-D and 1947-S dimes.

1946	1947
1946-D	1947-D
1946-S	1947-S

2. On the copy marked **RETURN THIS COPY** (indicated at bottom of front cover), completely fill in customer information on the back cover and return this portion of checklist at your earliest convenience. In the future, as you add to your collection please let us know of any new purchases, and we'll add them to your confidential list.

Please Note: some extremely scarce issues have been omitted from the checklist as these coins rarely if ever become available for sale.

Collecting Interests

I collect coins in the following grades: Good to Fine
 Very Fine to About Uncirculated Uncirculated & Proof
Grading explanations are on pages 3-5.

I am interested in receiving the following types of coins:

United States Coins

- Half Cents, *p. 6*
- Large Cents, *p. 6*
- Flying Eagle Cents, *p. 7*
- Indian Head Cents, *p. 7*
- Lincoln Cents, *p. 8*
- Lincoln Cent Proofs, *p. 10*
- Two-Cent Pieces, *p. 10*
- Silver Three-Cent Pieces, *p. 11*
- Nickel Three-Cent Pieces, *p. 11*
- Shield Nickels, *p. 11*
- Liberty Head Nickels, *p. 12*
- Buffalo Nickels, *p. 12*
- Jefferson Nickels, *p. 13*
- Jefferson Nickel Proofs, *p. 14*
- Early Half Dimes, *p. 14*
- Liberty Seated Half Dimes, *p. 15*
- Bust Dimes, *p. 16*
- Liberty Seated Dimes, *p. 16*
- Barber Dimes, *p. 17*
- Mercury Dimes, *p. 18*
- Roosevelt Dimes, *p. 18*
- Roosevelt Dime Proofs, *p. 19*
- Twenty-Cent Pieces, *p. 20*
- Bust Quarters, *p. 20*
- Liberty Seated Quarters, *p. 21*
- Barber Quarters, *p. 22*
- Standing Liberty Quarters, *p. 22*
- Washington Quarters, *p. 23*
- Washington Quarter Proofs, *p. 24*
- Statehood Quarters, *p. 24*

- Statehood Quarter Proofs, *p. 26*
- D.C. & U.S. Territories Quarters, *p. 27*
- D.C. & U.S. Territories Quarter Proofs, *p. 28*
- National Park Quarters, *p. 28*
- National Park Quarter Proofs, *p. 30*
- Early Half Dollars, *p. 32*
- Liberty Seated Half Dollars, *p. 33*
- Barber Half Dollars, *p. 35*
- Liberty Walking Half Dollars, *p. 35*
- Franklin Half Dollars, *p. 36*
- Kennedy Half Dollars, *p. 36*
- Kennedy Half Dollar Proofs, *p. 37*
- Bust Dollars, *p. 38*
- Liberty Seated Dollars, *p. 39*
- Trade Dollars, *p. 39*
- Morgan Dollars, *p. 40*
- Peace Dollars, *p. 41*
- Eisenhower Dollars, *p. 41*
- Susan B. Anthony Dollars, *p. 42*
- Sacagawea Dollars, *p. 42*
- Sacagawea Dollar Proofs, *p. 42*
- Native American Dollars, *p. 43*
- Native American Dollar Proofs, *p. 43*
- Presidential Dollars, *p. 43*
- Presidential Dollar Proofs, *p. 45*
- Silver Eagles, *p. 46*
- Proof Sets, *p. 47*
- Mint Sets, *p. 48*
- Early Commemoratives, *p. 49*
- Modern Commemoratives, *p. 50*

Interested in collecting paper money?

Call toll free 1-800-645-3122 for Littleton's Paper Money Checklists!

Collecting Interests

I collect coins in the following grades: Good to Fine
 Very Fine to About Uncirculated Uncirculated & Proof
Grading explanations are on pages 3-5.

I am interested in receiving the following types of coins:

United States Coins

- Half Cents, *p. 6*
- Large Cents, *p. 6*
- Flying Eagle Cents, *p. 7*
- Indian Head Cents, *p. 7*
- Lincoln Cents, *p. 8*
- Lincoln Cent Proofs, *p. 10*
- Two-Cent Pieces, *p. 10*
- Silver Three-Cent Pieces, *p. 11*
- Nickel Three-Cent Pieces, *p. 11*
- Shield Nickels, *p. 11*
- Liberty Head Nickels, *p. 12*
- Buffalo Nickels, *p. 12*
- Jefferson Nickels, *p. 13*
- Jefferson Nickel Proofs, *p. 14*
- Early Half Dimes, *p. 14*
- Liberty Seated Half Dimes, *p. 15*
- Bust Dimes, *p. 16*
- Liberty Seated Dimes, *p. 16*
- Barber Dimes, *p. 17*
- Mercury Dimes, *p. 18*
- Roosevelt Dimes, *p. 18*
- Roosevelt Dime Proofs, *p. 19*
- Twenty-Cent Pieces, *p. 20*
- Bust Quarters, *p. 20*
- Liberty Seated Quarters, *p. 21*
- Barber Quarters, *p. 22*
- Standing Liberty Quarters, *p. 22*
- Washington Quarters, *p. 23*
- Washington Quarter Proofs, *p. 24*
- Statehood Quarters, *p. 24*

- Statehood Quarter Proofs, *p. 26*
- D.C. & U.S. Territories Quarters, *p. 27*
- D.C. & U.S. Territories Quarter Proofs, *p. 28*
- National Park Quarters, *p. 28*
- National Park Quarter Proofs, *p. 30*
- Early Half Dollars, *p. 32*
- Liberty Seated Half Dollars, *p. 33*
- Barber Half Dollars, *p. 35*
- Liberty Walking Half Dollars, *p. 35*
- Franklin Half Dollars, *p. 36*
- Kennedy Half Dollars, *p. 36*
- Kennedy Half Dollar Proofs, *p. 37*
- Bust Dollars, *p. 38*
- Liberty Seated Dollars, *p. 39*
- Trade Dollars, *p. 39*
- Morgan Dollars, *p. 40*
- Peace Dollars, *p. 41*
- Eisenhower Dollars, *p. 41*
- Susan B. Anthony Dollars, *p. 42*
- Sacagawea Dollars, *p. 42*
- Sacagawea Dollar Proofs, *p. 42*
- Native American Dollars, *p. 43*
- Native American Dollar Proofs, *p. 43*
- Presidential Dollars, *p. 43*
- Presidential Dollar Proofs, *p. 45*
- Silver Eagles, *p. 46*
- Proof Sets, *p. 47*
- Mint Sets, *p. 48*
- Early Commemoratives, *p. 49*
- Modern Commemoratives, *p. 50*

Interested in collecting paper money?

Call toll free 1-800-645-3122 for Littleton's Paper Money Checklists!

YOUR GUIDE TO U.S. COIN GRADING

Grade, (or condition) is a measurement of a coin's state of preservation (or quality). As a general rule, the higher a coin's grade, the more scarce it is, since the majority of coins find their way into extensive circulation. In those cases, the higher a coin's quality, the greater its value, since the original design and appearance are more fully present.

Hobbyists collect coins in a variety of grades, based on their individual preferences and budgets. Coins in different grades command different prices depending on the series, scarcity, and demand. Below are general descriptions for circulated grades, as well as attributes of both Uncirculated and Proof coins. However, combinations of subtle differences can make up various ranges within a grade.

CIRCULATED COINS

Circulated coins have been used to some extent in daily commerce and have some "wear" from handling. Because older and scarcer U.S. coins may be very difficult to locate in mint Uncirculated condition, circulated coins may better suit your need for some coin series and issues. The grades for circulated U.S. coins are described as follows:



Good

Coin will have a fully readable date. The rims will be nearly full and may be worn down to the tops of the letters. The design of the coin will be fully outlined.

YOUR GUIDE TO U.S. COIN GRADING

Grade, (or condition) is a measurement of a coin's state of preservation (or quality). As a general rule, the higher a coin's grade, the more scarce it is, since the majority of coins find their way into extensive circulation. In those cases, the higher a coin's quality, the greater its value, since the original design and appearance are more fully present.

Hobbyists collect coins in a variety of grades, based on their individual preferences and budgets. Coins in different grades command different prices depending on the series, scarcity, and demand. Below are general descriptions for circulated grades, as well as attributes of both Uncirculated and Proof coins. However, combinations of subtle differences can make up various ranges within a grade.

CIRCULATED COINS

Circulated coins have been used to some extent in daily commerce and have some "wear" from handling. Because older and scarcer U.S. coins may be very difficult to locate in mint Uncirculated condition, circulated coins may better suit your need for some coin series and issues. The grades for circulated U.S. coins are described as follows:



Good

Coin will have a fully readable date. The rims will be nearly full and may be worn down to the tops of the letters. The design of the coin will be fully outlined.



Very Good

Coin will have a fully defined rim and full legends with all the lettering and numerals distinct. Some detail in the design of the coin will begin to show.



Fine

Moderate wear will be evident. The date will be bold and all letters and legends will be clear. Major elements in the design will show some separation.



Very Fine

Approximately two-thirds of the coin's overall design will be visible. The date, letters, and major elements of the design will be sharply defined.



Extra Fine

All elements in the design will be clearly visible. There may be mint luster evident, especially around the edges of the design. The high points of the design will be slightly worn.



Very Good

Coin will have a fully defined rim and full legends with all the lettering and numerals distinct. Some detail in the design of the coin will begin to show.



Fine

Moderate wear will be evident. The date will be bold and all letters and legends will be clear. Major elements in the design will show some separation.



Very Fine

Approximately two-thirds of the coin's overall design will be visible. The date, letters, and major elements of the design will be sharply defined.



Extra Fine

All elements in the design will be clearly visible. There may be mint luster evident, especially around the edges of the design. The high points of the design will be slightly worn.



About Uncirculated

Wear is evident only on the highest points of the design. There may be abundant mint luster.

UNCIRCULATED AND PROOF COINS



Uncirculated

Uncirculated coins exhibit no wear and display all of the original details. Generally more expensive than circulated coins, they represent greater quality and scarcity. Uncirculated grades range from MS-60 Typical to

MS-70 Perfect. Most specimens range from MS-60 to MS63+, as very few coins meet the technical standards for MS-65 or higher.

Proofs

Proof is not a grade, but a method of minting coins that represents the pinnacle of the minter's art. Proof coins are made by a special process that uses carefully selected coin blanks and dies. The blanks are slowly fed into a specially adapted press, then struck at least twice to produce high-relief features contrasted against deep mirror-like surfaces. Later, they are packaged for collectors only.



About Uncirculated

Wear is evident only on the highest points of the design. There may be abundant mint luster.

UNCIRCULATED AND PROOF COINS



Uncirculated

Uncirculated coins exhibit no wear and display all of the original details. Generally more expensive than circulated coins, they represent greater quality and scarcity. Uncirculated grades range from MS-60 Typical to

MS-70 Perfect. Most specimens range from MS-60 to MS63+, as very few coins meet the technical standards for MS-65 or higher.

Proofs

Proof is not a grade, but a method of minting coins that represents the pinnacle of the minter's art. Proof coins are made by a special process that uses carefully selected coin blanks and dies. The blanks are slowly fed into a specially adapted press, then struck at least twice to produce high-relief features contrasted against deep mirror-like surfaces. Later, they are packaged for collectors only.



Designs shown may not represent all dates in the series. Many recent coins are not listed and can be ordered from our price lists.



Half Cents Issued 1793-1857

		Classic Head	1834
			1809
			1810
		Braided Hair	
Liberty Cap	1803		1811
	1794		1825
	1795	1804 Spiked Chin	1826
	1797	1805	1828 13 stars
Draped Bust	1806	1828 12 stars	1854
	1800	1829	1855
	1802	1808	1832
		1808 8 over 7	1833
			1857



Large Cents Issued 1793-1857

			1814
		Liberty Head	
			1816
			1817 13 Stars
			1817 15 Stars
			1818
Liberty Cap	1801 3 errors	1806	1819
	1793	1807	1820
	1794	1807 7 over 6	1821
	1795	Classic Head	1822
	1796	1808	1823
		over 1/000	1824
Draped Bust	1802	1809	1825
	1797	1810	1826
	1798	1810 10 over 9	1827
	1799	1811	1828
	1800	1812	
	1801	1813	

Designs shown may not represent all dates in the series. Many recent coins are not listed and can be ordered from our price lists.



Half Cents Issued 1793-1857

		Classic Head	1834
			1809
			1810
		Braided Hair	
Liberty Cap	1803		1811
	1794		1825
	1795	1804 Spiked Chin	1826
	1797	1805	1828 13 stars
Draped Bust	1806	1828 12 stars	1854
	1800	1829	1855
	1802	1808	1832
		1808 8 over 7	1833
			1857



Large Cents Issued 1793-1857

			1814
		Liberty Head	
			1816
			1817 13 Stars
			1817 15 Stars
			1818
Liberty Cap	1801 3 errors	1806	1819
	1793	1807	1820
	1794	1807 7 over 6	1821
	1795	Classic Head	1822
	1796	1808	1823
		over 1/000	1824
Draped Bust	1802	1809	1825
	1797	1810	1826
	1798	1810 10 over 9	1827
	1799	1811	1828
	1800	1812	
	1801	1813	

Large Cents continued

1829	1838	1844	1853
1830	1839	1845	1854
1831	1839 Silly Head	1846	1855 Upright 5s
1832	1839 Booby Head	1847	1855 Slanted 5s
1833	1839 Petite Head	1848	1855 Slanted 5s
1834	1840	1849	Knob on Ear
1835	1841	1850	1856 Upright 5
1836	1842	1851	1856 Slanted 5
1837	1843	1852	1857

Large Cents continued

1829	1838	1844	1853
1830	1839	1845	1854
1831	1839 Silly Head	1846	1855 Upright 5s
1832	1839 Booby Head	1847	1855 Slanted 5s
1833	1839 Petite Head	1848	1855 Slanted 5s
1834	1840	1849	Knob on Ear
1835	1841	1850	1856 Upright 5
1836	1842	1851	1856 Slanted 5
1837	1843	1852	1857



Flying Eagle Cents

Issued 1856-1858

1856 Pattern	1858 Large Letters
1857	1858 Small Letters



Flying Eagle Cents

Issued 1856-1858

1856 Pattern	1858 Large Letters
1857	1858 Small Letters



Indian Head Cents

Issued 1859-1909

	1880	1896
	1881	1897
	1882	1898
	1883	1899
	1884	1900
	1869 9 over 9	1885
	1870	1886
	1871	1887
	1872	1888
	1873	1889
	1874	1890
	1875	1891
	1876	1892
	1877	1893
	1878	1894
	1879	1895
		1896
		1897
		1898
		1899
		1900
		1901
		1902
		1903
		1904
		1905
		1906
		1907
		1908
		1908-S
		1909
		1909-S

Copper-Nickel

Bronze



Indian Head Cents

Issued 1859-1909

	1880	1896
	1881	1897
	1882	1898
	1883	1899
	1884	1900
	1869 9 over 9	1885
	1870	1886
	1871	1887
	1872	1888
	1873	1889
	1874	1890
	1875	1891
	1876	1892
	1877	1893
	1878	1894
	1879	1895
		1896
		1897
		1898
		1899
		1900
		1901
		1902
		1903
		1904
		1905
		1906
		1907
		1908
		1908-S
		1909
		1909-S

Copper-Nickel

Bronze



Lincoln Cents

Issued 1909-Date

Wheat Ears

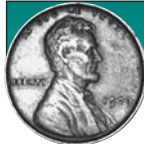
Reverse

1909 VDB	1919-S	1930-S
1909	1920	1931
1909-S VDB	1920-D	1931-D
1909-S	1920-S	1931-S
1910	1921	1932
1910-S	1921-S	1932-D
1911	1922-D	1933
1911-D	1922 No D	1933-D
1911-S	1923	1934
1912	1923-S	1934-D
1912-D	1924	1935
1912-S	1924-D	1935-D
1913	1924-S	1935-S
1913-D	1925	1936
1913-S	1925-D	1936-D
1914	1925-S	1937
1914-D	1926	1937-D
1914-S	1926-D	1937-S
1915	1926-S	1938
1915-D	1927	1938-D
1915-S	1927-D	1938-S
1916	1927-S	1939
1916-D	1928	1939-D
1916-S	1928-D	1940
1917	1928-S	1940-D
1917-D	1929	1940-S
1917-S	1929-D	1941
1918	1929-S	1941-D
1918-D	1930	1941-S
1918-S	1930-D	1942
		1942-D
		1942 S
		1942 S

Zinc-Coated Steel

1943
1943-D
1943-S

1944	1945	1945-D
1944-D	1945-S	1946
1944-S	1946-D	1946-S
1945	1946-S	1947
1945-D	1947	1947-D
1945-S	1947-S	1948
1946	1948	1948-D
1946-D	1948-S	1949
1946-S	1949	1949-D
1947	1949-S	1949-S
1947-D	1950	1950
1947-S	1950-D	1950-D
1948	1950-S	1950-S
1948-D	1951	1951-D
1948-S	1951-D	1951-S
1949	1951-S	1952
1949-D	1952	1952-D
1949-S	1952-D	1952-S
1950	1952-S	1953
1950-D	1953	1953-D
1950-S	1953-D	1953-D



Lincoln Cents

Issued 1909-Date

Wheat Ears

Reverse

1909 VDB	1919-S	1930-S
1909	1920	1931
1909-S VDB	1920-D	1931-D
1909-S	1920-S	1931-S
1910	1921	1932
1910-S	1921-S	1932-D
1911	1922-D	1933
1911-D	1922 No D	1933-D
1911-S	1923	1934
1912	1923-S	1934-D
1912-D	1924	1935
1912-S	1924-D	1935-D
1913	1924-S	1935-S
1913-D	1925	1936
1913-S	1925-D	1936-D
1914	1925-S	1937
1914-D	1926	1937-D
1914-S	1926-D	1937-S
1915	1926-S	1938
1915-D	1927	1938-D
1915-S	1927-D	1938-S
1916	1927-S	1939
1916-D	1928	1939-D
1916-S	1928-D	1940
1917	1928-S	1940-D
1917-D	1929	1940-S
1917-S	1929-D	1941
1918	1929-S	1941-D
1918-D	1930	1941-S
1918-S	1930-D	1942
		1942-D
		1942 S
		1942 S

Zinc-Coated Steel

1943
1943-D
1943-S

1944	1945	1945-D
1944-D	1946	1946-D
1944-S	1946-S	1947
1945	1947	1947-D
1945-D	1947-S	1948
1945-S	1948	1948-D
1946	1948-S	1949
1946-D	1949	1949-D
1946-S	1949-S	1949-S
1947	1950	1950
1947-D	1950-D	1950-D
1947-S	1950-S	1950-S
1948	1951	1951-D
1948-D	1951-D	1951-S
1948-S	1952	1952-D
1949	1952-D	1952-S
1949-D	1953	1953-D
1949-S	1953-D	1953-D

Lincoln Cents continued

1953-S	1970	1983
1954	1970-D	1983-D
1954-D	1970-S	1984
1954-S	1970-S Sm. Date	1984-D
1955	1970-S Lg. Date	1985
1955-D	1971	1985-D
1955-S	1971-D	1986
1955 Dbl. Die	1971-S	1986-D
1956	1972	1987
1956-D	1972-D	1987-D
1957	1972-S	1988
1957-D	1973	1988-D
1958	1973-D	1989
1958-D	1973-S	1989-D
Memorial Reverse	1974	1990
1959	1974-D	1990-D
1959-D	1974-S	1991
1960 Lg. Date	1975	1991-D
1960-D Lg. Date	1975-D	1992
1960 Sm. Date	1976	1992-D
1960-D Sm. Date	1976-D	1993
1961	1977	1993-D
1961-D	1977-D	1994
1962	1978	1994-D
1962-D	1978-D	1995
1963	1979	1995-D
1963-D	1979-D	1996
1964	1980	1996-D
1964-D	1980-D	1997
1965	1981	1997-D
1966	1981-D	1998
1967	1982	1998-D
1968	1982-D	1999
1968-D	Copper-Plated Zinc	1999-D
1968-S	1982 Lg. Date	2000
1969	1982 Sm. Date	2000-D
1969-D	1982-D Lg. Date	2001
1969-S	1982-D Sm. Date	2001-D
		2002

2002-D
2003
2003-D
2004
2004-D
2005
2005-D
2006
2006-D
2007
2007-D
2008
2008-D

Anniversary Reverses

Early
2009
2009-D

Formative
2009
2009-D

Professional
2009
2009-D

Presidency
2009
2009-D

Shield Reverse

2010
2010-D
2011
2011-D
2012
2012-D

Lincoln Cents continued

1953-S	1970	1983	2002-D
1954	1970-D	1983-D	2003
1954-D	1970-S	1984	2003-D
1954-S	1970-S Sm. Date	1984-D	2004
1955	1970-S Lg. Date	1985	2004-D
1955-D	1971	1985-D	2005
1955-S	1971-D	1986	2005-D
1955 Dbl. Die	1971-S	1986-D	2006
1956	1972	1987	2006-D
1956-D	1972-D	1987-D	2007
1957	1972-S	1988	2007-D
1957-D	1973	1988-D	2008
1958	1973-D	1989	2008-D
1958-D	1973-S	1989-D	
Memorial Reverse	1974	1990	
1959	1974-D	1990-D	
1959-D	1974-S	1991	
1960 Lg. Date	1975	1991-D	
1960-D Lg. Date	1975-D	1992	
1960 Sm. Date	1976	1992-D	
1960-D Sm. Date	1976-D	1993	
1961	1977	1993-D	
1961-D	1977-D	1994	
1962	1978	1994-D	
1962-D	1978-D	1995	
1963	1979	1995-D	
1963-D	1979-D	1996	
1964	1980	1996-D	
1964-D	1980-D	1997	
1965	1981	1997-D	
1966	1981-D	1998	
1967	1982	1998-D	
1968	1982-D	1999	
1968-D	Copper-Plated Zinc	1999-D	
1968-S	1982 Lg. Date	2000	
1969	1982 Sm. Date	2000-D	
1969-D	1982-D Lg. Date	2001	
1969-S	1982-D Sm. Date	2001-D	
		2002	

Anniversary Reverses

Early
2009
2009-D

Formative
2009
2009-D

Professional
2009
2009-D

Presidency
2009
2009-D

Shield Reverse

2010
2010-D
2011
2011-D
2012
2012-D

Lincoln Cents continued

2013	2014	2015	2016
2013-D	2014-D	2015-D	2016-D



Lincoln Cents
Proof only issues

1975-S	1986-S	2002-S	Shield Reverse
1976-S	1987-S	2003-S	
1977-S	1988-S	2004-S	
1978-S	1989-S	2005-S	
1979-S Filled S	1990-S	2006-S	
1979-S Clear S	1991-S	2007-S	
1980-S	1992-S	2008-S	
1981-S Filled S	1993-S		
1981-S Clear S	1994-S	Anniversary Reverses	
1982-S	1995-S	Early	
Copper-Plated Zinc	1996-S	2009-S	
1982-S	1997-S	Formative	
1983-S	1998-S	2009-S	
1984-S	1999-S	Professional	
1985-S	2000-S	2009 -S	
	2001-S	Presidency	
		2009-S	

Lincoln Cents continued

2013	2014	2015	2016
2013-D	2014-D	2015-D	2016-D



Lincoln Cents
Proof only issues

1975-S	1986-S	2002-S	Shield Reverse
1976-S	1987-S	2003-S	
1977-S	1988-S	2004-S	
1978-S	1989-S	2005-S	
1979-S Filled S	1990-S	2006-S	
1979-S Clear S	1991-S	2007-S	
1980-S	1992-S	2008-S	
1981-S Filled S	1993-S		
1981-S Clear S	1994-S	Anniversary Reverses	
1982-S	1995-S	Early	
Copper-Plated Zinc	1996-S	2009-S	
1982-S	1997-S	Formative	
1983-S	1998-S	2009-S	
1984-S	1999-S	Professional	
1985-S	2000-S	2009 -S	
	2001-S	Presidency	
		2009-S	



Two Cent Pieces
Issued 1864-1873

			1869
			1870
			1871
1864 Sm. Motto	1865	1867	1872
1864 Lg. Motto	1866	1868	1873



Two Cent Pieces
Issued 1864-1873

			1869
			1870
			1871
1864 Sm. Motto	1865	1867	1872
1864 Lg. Motto	1866	1868	1873



Silver Three-Cent Pieces

Issued 1851-1873

Type I

1851
1851-O
1852
1853

Type II

1854
1855
1856
1857
1858

Type III

1859
1860
1861
1862



Silver Three-Cent Pieces

Issued 1851-1873

Type I

1851
1851-O
1852
1853

Type II

1854
1855
1856
1857
1858

Type III

1859
1860
1861
1862



Nickel Three-Cent Pieces

Issued 1865-1889

1865
1866
1867
1868
1869
1870

1871
1872
1873 Closed 3
1873 Open 3
1874
1875

1876
1878 Proof Only
1879
1880
1881
1882
1883

1884
1885
1886 Proof Only
1887
1888
1889



Nickel Three-Cent Pieces

Issued 1865-1889

1865
1866
1867
1868
1869
1870

1871
1872
1873 Closed 3
1873 Open 3
1874
1875

1876
1878 Proof Only
1879
1880
1882
1883

1884
1885
1886 Proof Only
1887
1888
1889



Shield Nickels

Issued 1866-1883

1866
1867 Rays
1867 No Rays
1868

1869
1870
1871
1872

1873 Closed 3
1873 Open 3
1874
1875
1876
1879

1880
1881
1882
1883
1883 3 over 2



Shield Nickels

Issued 1866-1883

1866
1867 Rays
1867 No Rays
1868

1869
1870
1871
1872

1873 Closed 3
1873 Open 3
1874
1875
1876
1879

1880
1881
1882
1883
1883 3 over 2



Liberty Head Nickels

Issued 1883-1913

1883 W/O Cents	1889	1896	1906
1883 W Cents	1890	1897	1907
1884	1891	1898	1908
1885	1892	1899	1909
1886	1893	1900	1910
1887	1894	1901	1911
1888	1895	1902	1912
		1903	1912-D
		1904	1912-S
		1905	



Indian Head or Buffalo

Issued 1913-1938

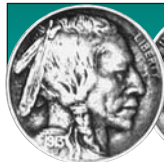
Type I	1916-D	1923	1929-S
Raised Ground	1916-S	1923-S	1930
1913	1917	1924	1930-S
1913-D	1917-D	1924-D	1931-S
1913-S	1917-S	1924-S	1934
Type II	1918	1925	1934-D
Flat Ground	1918-D	1925-D	1935
1913	1918-D 8 over 7	1925-S	1935-D
1913-D	1918-S	1926	1935-S
1913-S	1919	1926-D	1936
1914	1919-D	1926-S	1936-D
1914-D	1919-S	1927	1936-S
1914-S	1920	1927-D	1937
1915	1920-D	1927-S	1937-D
1915-D	1920-S	1928	1937-D 3 Legged
1915-S	1921	1928-D	1937-S
1916	1921-S	1928-S	1938-D
		1929	1938-D over S
		1929-D	



Liberty Head Nickels

Issued 1883-1913

1883 W/O Cents	1889	1896	1906
1883 W Cents	1890	1897	1907
1884	1891	1898	1908
1885	1892	1899	1909
1886	1893	1900	1910
1887	1894	1901	1911
1888	1895	1902	1912
		1903	1912-D
		1904	1912-S
		1905	



Indian Head or Buffalo

Issued 1913-1938

Type I	1916-D	1923	1929-S
Raised Ground	1916-S	1923-S	1930
1913	1917	1924	1930-S
1913-D	1917-D	1924-D	1931-S
1913-S	1917-S	1924-S	1934
Type II	1918	1925	1934-D
Flat Ground	1918-D	1925-D	1935
1913	1918-D 8 over 7	1925-S	1935-D
1913-D	1918-S	1926	1935-S
1913-S	1919	1926-D	1936
1914	1919-D	1926-S	1936-D
1914-D	1919-S	1927	1936-S
1914-S	1920	1927-D	1937
1915	1920-D	1927-S	1937-D
1915-D	1920-S	1928	1937-D 3 Legged
1915-S	1921	1928-D	1937-S
1916	1921-S	1928-S	1938-D
		1929	1938-D over S
		1929-D	



Jefferson Nickels

Issued 1938-Date

1938	1946-S	1960	1978-D	1997-P
1938-D	1947	1960-D	1979	1997-D
1938-S	1947-D	1961	1979-D	1998-P
1939	1947-S	1961-D	1980-P	1998-D
1939-D	1948	1962	1980-D	1999-P
1939-S	1948-D	1962-D	1981-P	1999-D
1940	1948-S	1963	1981-D	2000-P
1940-D	1949	1963-D	1982-P	2000-D
1940-S	1949-D	1964	1982-D	2001-P
1941	1949-S	1964-D	1983-P	2001-D
1941-D	1950	1965	1983-D	2002-P
1941-S	1950-D	1966	1984-P	2002-D
1942	1951	1967	1984-D	2003-P
1942-D	1951-D	1968-D	1985-P	2003-D
1942-S	1951-S	1968-S	1985-D	
1943-P	1952	1969-D	1986-P	
1943-D	1952-D	1969-S	1986-D	
1943-S	1952-S	1970-D	1987-P	
1944-P	1953	1970-S	1987-D	
1944-D	1953-D	1971	1988-P	
1944-S	1954	1971-D	1988-D	
1945-P	1954-D	1972	1989-P	
1945-D	1954-S	1972-D	1989-D	
1945-S	1955	1973-D	1990-P	
	1955-D	1974	1990-D	
	1956	1974-D	1991-P	
	1956-D	1975	1991-D	
	1957	1975-D	1992-P	
	1957-D	1976	1992-D	
	1958	1976-D	1993-P	
	1958-D	1977	1993-D	
	1959	1977-D	1994-P	
	1959-D	1978	1994-D	
			1995-P	
			1995-D	
			1996-P	
			1996-D	

Westward Journey

Peace Medal

2004-P

Keelboat

2004-P

2004-D

American Bison

2005-P

2005-D

Ocean in View

2005-P

2005-D

Monticello

2006-P

2006-D

Pre-War Composition Resumed



Jefferson Nickels

Issued 1938-Date

1938	1946-S	1960	1978-D	1997-P
1938-D	1947	1960-D	1979	1997-D
1938-S	1947-D	1961	1979-D	1998-P
1939	1947-S	1961-D	1980-P	1998-D
1939-D	1948	1962	1980-D	1999-P
1939-S	1948-D	1962-D	1981-P	1999-D
1940	1948-S	1963	1981-D	2000-P
1940-D	1949	1963-D	1982-P	2000-D
1940-S	1949-D	1964	1982-D	2001-P
1941	1949-S	1964-D	1983-P	2001-D
1941-D	1950	1965	1983-D	2002-P
1941-S	1950-D	1966	1984-P	2002-D
1942	1951	1967	1984-D	2003-P
1942-D	1951-D	1968-D	1985-P	2003-D
1942-S	1951-S	1968-S	1985-D	
1943-P	1952	1969-D	1986-P	
1943-D	1952-D	1969-S	1986-D	
1943-S	1952-S	1970-D	1987-P	
1944-P	1953	1970-S	1987-D	
1944-D	1953-D	1971	1988-P	
1944-S	1954	1971-D	1988-D	
1945-P	1954-D	1972	1989-P	
1945-D	1954-S	1972-D	1989-D	
1945-S	1955	1973-D	1990-P	
	1955-D	1974	1990-D	
	1956	1974-D	1991-P	
	1956-D	1975	1991-D	
	1957	1975-D	1992-P	
	1957-D	1976	1992-D	
	1958	1976-D	1993-P	
	1958-D	1977	1993-D	
	1959	1977-D	1994-P	
	1959-D	1978	1994-D	
			1995-P	
			1995-D	
			1996-P	
			1996-D	

Westward Journey

Peace Medal

2004-P

Keelboat

2004-P

2004-D

American Bison

2005-P

2005-D

Ocean in View

2005-P

2005-D

Monticello

2006-P

2006-D

Pre-War Composition Resumed

Jefferson Nickels continued

Monticello Resumed	2011-P	2013-D	2016-P
2007-P	2009-P	2011-D	2014-P
2007-D	2009-D	2012-P	2014-D
2008-P	2010-P	2012-D	2015-P
2008-D	2010-D	2013-P	2015-D



Jefferson Nickels
Proof only issues

1998-S
1999-S
2000-S
2001-S
2002-S
2003-S

Monticello
2006-S

Monticello Resumed

2007-S
2008-S
2009-S
2010-S
2011-S
2012-S
2013-S
2014-S
2015-S
2016-S

Westward Journey
Peace Medal
2004-S
Keelboat
2004-S
American Bison
2005-S
Ocean in View
2005-S

1971-S
1972-S
1973-S
1974-S
1975-S
1976-S
1977-S
1978-S
1979-S Filled S
1979-S Clear S
1980-S
1981-S
1982-S
1983-S

1984-S
1985-S
1986-S
1987-S
1988-S
1989-S
1990-S
1991-S
1992-S
1993-S
1994-S
1995-S
1996-S
1997-S

Jefferson Nickels continued

Monticello Resumed	2011-P	2013-D	2016-P
2007-P	2009-P	2011-D	2014-P
2007-D	2009-D	2012-P	2014-D
2008-P	2010-P	2012-D	2015-P
2008-D	2010-D	2013-P	2015-D



Jefferson Nickels
Proof only issues

1998-S
1999-S
2000-S
2001-S
2002-S
2003-S

Monticello
2006-S

Monticello Resumed

2007-S
2008-S
2009-S
2010-S
2011-S
2012-S
2013-S
2014-S
2015-S
2016-S

Westward Journey
Peace Medal
2004-S
Keelboat
2004-S
American Bison
2005-S
Ocean in View
2005-S

1971-S
1972-S
1973-S
1974-S
1975-S
1976-S
1977-S
1978-S
1979-S Filled S
1979-S Clear S
1980-S
1981-S
1982-S
1983-S

1984-S
1985-S
1986-S
1987-S
1988-S
1989-S
1990-S
1991-S
1992-S
1993-S
1994-S
1995-S
1996-S
1997-S



Early Half Dimes
Issued 1794-1837

Draped Bust, Small Eagle

1796
1797

Draped Bust, Heraldic Eagle

1800
1801
1803
1805

Flowing Hair
1794
1795



Early Half Dimes
Issued 1794-1837

Draped Bust, Small Eagle

1796
1797

Draped Bust, Heraldic Eagle

1800
1801
1803
1805

Flowing Hair
1794
1795

Early Half Dimes continued

Capped Bust	1832	1835 Small Date
1829	1833	1836
1830	1834	1837
1831	1835 Large Date	



Variety 1	1849-O	Variety 4, Legend on Obverse
No Stars on Obv.	1850	1860
1837 Small Date	1850-O	1860-O
1837 Large Date	1851	1861
1838-O	1851-O	1862
Variety 2	1852	1863
Stars on Obv.	1852-O	1863-S
1838 No Drapery	1853 No Arrows	1864
1839 No Drapery	1853-O No Arrows	1864-S
1839-O No Drapery	Variety 3,	1865
1840 No Drapery	Arrows at Date	1865-S
1840-O No Drapery	1853	1866
1840 Drapery	1853-O	1866-S
1840-O Drapery	1854	1867
1841	1854-O	1867-S
1841-O	1855	1868
1842	1855-O	1868-S
1842-O	Variety 2	1869
1843	Resumed	1869-S
1844	1856	1870
1844-O	1856-O	1870-S
1845	1857	1871
1846	1857-O	1871-S
1847	1858	1872
1848	1858-O	1872-S
1848-O	1859	1873
1849	1859-O	1873-S

Early Half Dimes continued

Capped Bust	1832	1835 Small Date
1829	1833	1836
1830	1834	1837
1831	1835 Large Date	



Variety 1	1849-O	Variety 4, Legend on Obverse
No Stars on Obv.	1850	1860
1837 Small Date	1850-O	1860-O
1837 Large Date	1851	1861
1838-O	1851-O	1862
Variety 2	1852	1863
Stars on Obv.	1852-O	1863-S
1838 No Drapery	1853 No Arrows	1864
1839 No Drapery	1853-O No Arrows	1864-S
1839-O No Drapery	Variety 3,	1865
1840 No Drapery	Arrows at Date	1865-S
1840-O No Drapery	1853	1866
1840 Drapery	1853-O	1866-S
1840-O Drapery	1854	1867
1841	1854-O	1867-S
1841-O	1855	1868
1842	1855-O	1868-S
1842-O	Variety 2	1869
1843	Resumed	1869-S
1844	1856	1870
1844-O	1856-O	1870-S
1845	1857	1871
1846	1857-O	1871-S
1847	1858	1872
1848	1858-O	1872-S
1848-O	1859	1873
1849	1859-O	1873-S



Bust Dimes

Issued 1796-1837

Draped Bust, Small Eagle

1796	1801
1797	1802
1798	1803
1800	1804
	1805
	1807
	Capped Bust
	1809

1811 over 9	1829
1814	1830
1820	1831
1821	1832
1822	1833
1823	1834
1824	1835
1825	1836
1827	1837
1828	



Bust Dimes

Issued 1796-1837

Draped Bust, Small Eagle

1796	1801
1797	1802
1798	1803
1800	1804
	1805
	1807
	Capped Bust
	1809

1811 over 9	1829
1814	1830
1820	1831
1821	1832
1822	1833
1823	1834
1824	1835
1825	1836
1827	1837
1828	



Liberty Seated Dimes

Issued 1837-1891

Variety 1, No Stars on Obverse

1837 Large Date	1844
1837 Small Date	1845
1838-O	1845-O
1839	1846
1839-O	1847
1840	1848
1840-O	1849
1841	1849-O
1841-O	1850
1842	1850-O
	1851
	1851-O
	1852
	1852-O

Variety 3, Arrows at Date

1853	1853 With Arrows
1853-O	
1853-S	
1854	
1854-O	
1855	
Variety 2	
Resumed	
1856	
1856-O	
1856-S	
1857	
1857-O	
1858	
1858-O	
1858-S	
1859	

Variety 4, Legend on Obverse

1859-O	
1859-S	
1860-S	
1860	
1860-O	
1861	
1861-S	
1862	
1862-S	
1863	
1863-S	
1864	
1864-S	
1865	
1865-S	
1866	
1866-S	

Variety 2, Stars on Obverse

1837	1842-O
1839	1843
1839-O	1843-O
1840	1844
1840-O	1845
1841	1845-O
1841-O	1846
1842	1847
	1848
	1849
	1849-O
	1850
	1850-O
	1851
	1851-O
	1852
	1852-O



Liberty Seated Dimes

Issued 1837-1891

Variety 1, No Stars on Obverse

1837 Large Date	1844
1837 Small Date	1845
1838-O	1845-O
1839	1846
1839-O	1847
1840	1848
1840-O	1849
1841	1849-O
1841-O	1850
1842	1850-O
	1851
	1851-O
	1852
	1852-O

Variety 3, Arrows at Date

1853	1853 With Arrows
1853-O	
1853-S	
1854	
1854-O	
1855	
Variety 2	
Resumed	
1856	
1856-O	
1856-S	
1857	
1857-O	
1858	
1858-O	
1858-S	
1859	

Variety 4, Legend on Obverse

1859-O	
1859-S	
1860-S	
1860	
1860-O	
1861	
1861-S	
1862	
1862-S	
1863	
1863-S	
1864	
1864-S	
1865	
1865-S	
1866	
1866-S	

Liberty Seated Dimes continued

1867	Variety 5,	1876-CC	1885-S
1867-S	Arrows at	1876-S	1886
1868	Date	1877	1886-S
1868-S	1873	1877-CC	1887
1869	1873-CC	1877-S	1887-S
1869-S	1873-S	1878	1888
1870	1874	1878-CC	1888-S
1870-S	1874-CC	1879	1889
1871	1874-S	1880	1889-S
1871-CC	Variety 4	1881	1890
1871-S	Resumed	1882	1890-S
1872	1875	1883	1891
1872-CC	1875-CC	1884	1891-O
1872-S	1875-S	1884-S	1891-S
1873	1876	1885	

Liberty Seated Dimes continued

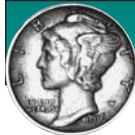
1867	Variety 5,	1876-CC	1885-S
1867-S	Arrows at	1876-S	1886
1868	Date	1877	1886-S
1868-S	1873	1877-CC	1887
1869	1873-CC	1877-S	1887-S
1869-S	1873-S	1878	1888
1870	1874	1878-CC	1888-S
1870-S	1874-CC	1879	1889
1871	1874-S	1880	1889-S
1871-CC	Variety 4	1881	1890
1871-S	Resumed	1882	1890-S
1872	1875	1883	1891
1872-CC	1875-CC	1884	1891-O
1872-S	1875-S	1884-S	1891-S
1873	1876	1885	

Barber Dimes
Issued 1892-1916

			1907-D	1911-S
			1907-O	1912
1892	1897-O	1902-O	1907-S	1912-D
1892-O	1897-S	1902-S	1908	1912-S
1892-S	1898	1903	1908-D	1913
1893	1898-O	1903-O	1908-O	1913-S
1893-O	1898-S	1903-S	1908-S	1914
1893-S	1899	1904	1909	1914-D
1894	1899-O	1904-S	1909-D	1914-S
1894-O	1899-S	1905	1909-O	1915
1895	1900	1905-O	1909-S	1915-S
1895-O	1900-O	1905-S	1910	1916
1895-S	1900-S	1906	1910-D	1916-S
1896	1901	1906-D	1910-S	
1896-O	1901-O	1906-O	1911	
1896-S	1901-S	1906-S	1911-D	
1897	1902	1907		

Barber Dimes
Issued 1892-1916

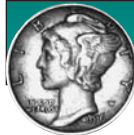
			1907-D	1911-S
			1907-O	1912
1892	1897-O	1902-O	1907-S	1912-D
1892-O	1897-S	1902-S	1908	1912-S
1892-S	1898	1903	1908-D	1913
1893	1898-O	1903-O	1908-O	1913-S
1893-O	1898-S	1903-S	1908-S	1914
1893-S	1899	1904	1909	1914-D
1894	1899-O	1904-S	1909-D	1914-S
1894-O	1899-S	1905	1909-O	1915
1895	1900	1905-O	1909-S	1915-S
1895-O	1900-O	1905-S	1910	1916
1895-S	1900-S	1906	1910-D	1916-S
1896	1901	1906-D	1910-S	
1896-O	1901-O	1906-O	1911	
1896-S	1901-S	1906-S	1911-D	
1897	1902	1907		



Mercury Dimes

Issued 1916-1945

1916	1924	1930-S	1940
1916-D	1924-D	1931	1940-D
1916-S	1924-S	1931-D	1940-S
1917	1925	1931-S	1941
1917-D	1925-D	1934	1941-D
1917-S	1925-S	1934-D	1941-S
1918	1926	1935	1942 2 over 1
1918-D	1926-D	1935-D	1942
1918-S	1926-S	1935-S	1942-D 2 over 1
1919	1927	1936	1942-D
1919-D	1927-D	1936-D	1942-S
1919-S	1927-S	1936-S	1943
1920	1928	1937	1943-D
1920-D	1928-D	1937-D	1943-S
1920-S	1928-S	1937-S	1944
1921	1929	1938	1944-D
1921-D	1929-D	1938-D	1944-S
1923	1929-S	1938-S	1945
1923-S	1930	1939	1945-D
		1939-D	1945-S
		1939-S	1945-S Micro S



Mercury Dimes

Issued 1916-1945

1916	1924	1930-S	1940
1916-D	1924-D	1931	1940-D
1916-S	1924-S	1931-D	1940-S
1917	1925	1931-S	1941
1917-D	1925-D	1934	1941-D
1917-S	1925-S	1934-D	1941-S
1918	1926	1935	1942 2 over 1
1918-D	1926-D	1935-D	1942
1918-S	1926-S	1935-S	1942-D 2 over 1
1919	1927	1936	1942-D
1919-D	1927-D	1936-D	1942-S
1919-S	1927-S	1936-S	1943
1920	1928	1937	1943-D
1920-D	1928-D	1937-D	1943-S
1920-S	1928-S	1937-S	1944
1921	1929	1938	1944-D
1921-D	1929-D	1938-D	1944-S
1923	1929-S	1938-S	1945
1923-S	1930	1939	1945-D
		1939-D	1945-S
		1939-S	1945-S Micro S



Roosevelt Dimes

Issued 1946-Date

1946	1948-S	1951-D	1955
1946-D	1949	1951-S	1955-D
1946-S	1949-D	1952	1955-S
1947	1949-S	1952-D	1956
1947-D	1950	1952-S	1956-D
1947-S	1950-D	1953	1957
1948	1950-S	1953-D	1957-D
1948-D	1951	1953-S	1958
		1954	1958-D
		1954-D	1959
		1954-S	1959-D



Roosevelt Dimes

Issued 1946-Date

1946	1948-S	1951-D	1955
1946-D	1949	1951-S	1955-D
1946-S	1949-D	1952	1955-S
1947	1949-S	1952-D	1956
1947-D	1950	1952-S	1956-D
1947-S	1950-D	1953	1957
1948	1950-S	1953-D	1957-D
1948-D	1951	1953-S	1958
		1954	1958-D
		1954-D	1959
		1954-S	1959-D

Roosevelt Dimes continued

1960	1975-D	1989-D	2003-D
1960-D	1976	1990-P	2004-P
1961	1976-D	1990-D	2004-D
1961-D	1977	1991-P	2005-P
1962	1977-D	1991-D	2005-D
1962-D	1978	1992-P	2006-P
1963	1978-D	1992-D	2006-D
1963-D	1979	1993-P	2007-P
1964	1979-D	1993-D	2007-D
1964-D	1980-P	1994-P	2008-P
1965	1980-D	1994-D	2008-D
1966	1981-P	1995-P	2009-P
1967	1981-D	1995-D	2009-D
1968	1982-P	1996-P	2010-P
1968-D	1982-D	1996-D	2010-D
1969	1983-P	1997-P	2011-P
1969-D	1983-D	1997-D	2011-D
1970	1984-P	1998-P	2012-P
1970-D	1984-D	1998-D	2012-D
1971	1985-P	1999-P	2013-P
1971-D	1985-D	1999-D	2013-D
1972	1986-P	2000-P	2014-P
1972-D	1986-D	2000-D	2014-D
1973	1987-P	2001-P	2015-P
1973-D	1987-D	2001-D	2015-D
1974	1988-P	2002-P	2016-P
1974-D	1988-D	2002-D	2016-D
1975	1989-P	2003-P	



Roosevelt Dimes

Proof only issues

1968-S	1973-S	1978-S	1984-S
1969-S	1974-S	1979-S Filled S	1985-S
1970-S	1975-S	1979-S Clear S	1986-S
1971-S	1976-S	1980-S	1987-S
1972-S	1977-S	1981-S	1988-S
		1982-S	1989-S
		1983-S	1990-S

Roosevelt Dimes continued

1960	1975-D	1989-D	2003-D
1960-D	1976	1990-P	2004-P
1961	1976-D	1990-D	2004-D
1961-D	1977	1991-P	2005-P
1962	1977-D	1991-D	2005-D
1962-D	1978	1992-P	2006-P
1963	1978-D	1992-D	2006-D
1963-D	1979	1993-P	2007-P
1964	1979-D	1993-D	2007-D
1964-D	1980-P	1994-P	2008-P
1965	1980-D	1994-D	2008-D
1966	1981-P	1995-P	2009-P
1967	1981-D	1995-D	2009-D
1968	1982-P	1996-P	2010-P
1968-D	1982-D	1996-D	2010-D
1969	1983-P	1997-P	2011-P
1969-D	1983-D	1997-D	2011-D
1970	1984-P	1998-P	2012-P
1970-D	1984-D	1998-D	2012-D
1971	1985-P	1999-P	2013-P
1971-D	1985-D	1999-D	2013-D
1972	1986-P	2000-P	2014-P
1972-D	1986-D	2000-D	2014-D
1973	1987-P	2001-P	2015-P
1973-D	1987-D	2001-D	2015-D
1974	1988-P	2002-P	2016-P
1974-D	1988-D	2002-D	2016-D
1975	1989-P	2003-P	



Roosevelt Dimes

Proof only issues

1968-S	1973-S	1978-S	1984-S
1969-S	1974-S	1979-S Filled S	1985-S
1970-S	1975-S	1979-S Clear S	1986-S
1971-S	1976-S	1980-S	1987-S
1972-S	1977-S	1981-S	1988-S
		1982-S	1989-S
		1983-S	1990-S

Roosevelt Dime Proofs continued

1991-S	1998-S	2004-S Silver	2011-S
1992-S	1998-S Silver	2005-S	2011-S Silver
1992-S Silver	1999-S	2005-S Silver	2012-S
1993-S	1999-S Silver	2006-S	2012-S Silver
1993-S Silver	2000-S	2006-S Silver	2013-S
1994-S	2000-S Silver	2007-S	2013-S Silver
1994-S Silver	2001-S	2007-S Silver	2014-S
1995-S	2001-S Silver	2008-S	2014-S Silver
1995-S Silver	2002-S	2008-S Silver	2015-S
1996-S	2002-S Silver	2009-S	2015-S Silver
1996-S Silver	2003-S	2009-S Silver	2016-S
1997-S	2003-S Silver	2010-S	2016-S Silver
1997-S Silver	2004-S	2010-S Silver	2016-S Silver

Roosevelt Dime Proofs continued

1991-S	1998-S	2004-S Silver	2011-S
1992-S	1998-S Silver	2005-S	2011-S Silver
1992-S Silver	1999-S	2005-S Silver	2012-S
1993-S	1999-S Silver	2006-S	2012-S Silver
1993-S Silver	2000-S	2006-S Silver	2013-S
1994-S	2000-S Silver	2007-S	2013-S Silver
1994-S Silver	2001-S	2007-S Silver	2014-S
1995-S	2001-S Silver	2008-S	2014-S Silver
1995-S Silver	2002-S	2008-S Silver	2015-S
1996-S	2002-S Silver	2009-S	2015-S Silver
1996-S Silver	2003-S	2009-S Silver	2016-S
1997-S	2003-S Silver	2010-S	2016-S Silver
1997-S Silver	2004-S	2010-S Silver	2016-S Silver



Twenty-Cent Pieces Issued 1875-1878

1875	1876-CC
1875-CC	1877
1875-S	1878
1876	



Twenty-Cent Pieces Issued 1875-1878

1875	1876-CC
1875-CC	1877
1875-S	1878
1876	



Bust Quarters Issued 1796-1838

1825
1828
Variety 2,
Reduced Size, No
Motto on Reverse
1831
1832
1833
1834
1835
1836
1837
1838

Draped Bust, Small Eagle Reverse

1796
Heraldic Eagle
Reverse
1804
1805
1806
1807

Capped Bust, Large Size

1815
1818
1819
1820
1821
1822
1824



Bust Quarters Issued 1796-1838

1825
1828
Variety 2,
Reduced Size, No
Motto on Reverse
1831
1832
1833
1834
1835
1836
1837
1838

Draped Bust, Small Eagle Reverse

1796
Heraldic Eagle
Reverse
1804
1805
1806
1807

Capped Bust, Large Size

1815
1818
1819
1820
1821
1822
1824



Liberty Seated Quarters

Issued 1838-1891

Variety 1, No Motto Above Eagle

1838
1839
1840
1840-O
1841
1841-O
1842 Large Date
1842-O
1843
1843-O
1844
1844-O
1845
1846
1847
1847-O
1848
1849
1849-O
1850
1850-O
1851
1851-O
1852
1852-O

Variety 2, Arrows at Date, Rays Around Eagle

1853
1853-O
**Variety 3,
Arrows at
Date,
No Rays**

1854
1854-O
1855
1855-O
1855-S
**Variety 1
Resumed**
1856
1856-O
1856-S
1857
1857-O
1857-S
1858
1858-O
1858-S
1859
1859-O
1859-S
1860

1860-O
1860-S
1861
1861-S
1862
1862-S
1863
1864
1864-S
1865
1865-S

Variety 4 Resumed

1866
1866-S
1867
1867-S
1868
1868-S
1869
1869-S
1870
1870-CC
1871
1871-CC
1871-S
1872
1872-CC
1872-S
1873

**Variety 4,
Motto
Above Eagle**
1877-CC
1877-S
1878
1878-CC
1878-S
1879
1880
1881
1882
1883
1884
1885
1886
1887
1888
1888-S
1889
1890
**Variety 5,
Arrows at Date**
1891
1891-O
1891-S

1873-CC
1873-S
1874
1874-S
1875
1875-CC
1875-S
1876
1876-CC
1876-S
1877
1877-CC
1877-S
1878
1878-CC
1878-S
1879
1880
1881
1882
1883
1884
1885
1886
1887
1888
1888-S
1889
1890
1891
1891-O
1891-S



Liberty Seated Quarters

Issued 1838-1891

Variety 1, No Motto Above Eagle

1838
1839
1840
1840-O
1841
1841-O
1842 Large Date
1842-O
1843
1843-O
1844
1844-O
1845
1846
1847
1847-O
1848
1849
1849-O
1850
1850-O
1851
1851-O
1852-O

Variety 2, Arrows at Date, Rays Around Eagle

1853
1853-O
**Variety 3,
Arrows at
Date,
No Rays**

1854
1854-O
1855
1855-O
1855-S
**Variety 1
Resumed**
1856
1856-O
1856-S
1857
1857-O
1857-S
1858
1858-O
1858-S
1859
1859-O
1859-S
1860

1860-O
1860-S
1861
1861-S
1862
1862-S
1863
1864
1864-S
1865
1865-S

Variety 4, Motto Above Eagle

1866
1866-S
1867
1867-S
1868
1868-S
1869
1869-S
1870
1870-CC
1871
1871-CC
1871-S
1872
1872-CC
1872-S
1873
**Variety 5,
Arrows at Date**
1891
1891-O
1891-S

1873-CC
1873-S
1874
1874-S
1875
1875-CC
1875-S
1876
1876-CC
1876-S
1877
1877-CC
1877-S
1878
1878-CC
1878-S
1879
1880
1881
1882
1883
1884
1885
1886
1887
1888
1888-S
1889
1890
1891
1891-O
1891-S



Barber Quarters

Issued 1892-1916

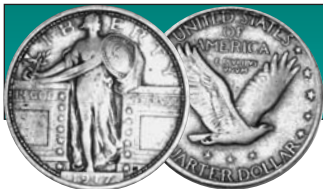
			1906-D	1911
			1906-O	1911-D
1892	1896-S	1901-O	1907	1911-S
1892-O	1897	1901-S	1907-D	1912
1892-S	1897-O	1902	1907-O	1912-S
1893	1897-S	1902-O	1907-S	1913
1893-O	1898	1902-S	1908	1913-D
1893-S	1898-O	1903	1908-D	1913-S
1894	1898-S	1903-O	1908-O	1914
1894-O	1899	1903-S	1908-S	1914-D
1894-S	1899-O	1904	1909	1914-S
1895	1899-S	1904-O	1909-D	1915
1895-O	1900	1905	1909-O	1915-D
1895-S	1900-O	1905-O	1909-S	1915-S
1896	1900-S	1905-S	1910	1916
1896-O	1901	1906	1910-D	1916-D



Barber Quarters

Issued 1892-1916

			1906-D	1911
			1906-O	1911-D
1892	1896-S	1901-O	1907	1911-S
1892-O	1897	1901-S	1907-D	1912
1892-S	1897-O	1902	1907-O	1912-S
1893	1897-S	1902-O	1907-S	1913
1893-O	1898	1902-S	1908	1913-D
1893-S	1898-O	1903	1908-D	1913-S
1894	1898-S	1903-O	1908-O	1914
1894-O	1899	1903-S	1908-S	1914-D
1894-S	1899-O	1904	1909	1914-S
1895	1899-S	1904-O	1909-D	1915
1895-O	1900	1905	1909-O	1915-D
1895-S	1900-O	1905-O	1909-S	1915-S
1896	1900-S	1905-S	1910	1916
1896-O	1901	1906	1910-D	1916-D



Standing Liberty Quarters

Issued 1916-1930

			1924	1927-S
			1924-D	1928
Variety 1	1917-D	1919-S	1924-S	1928-D
1916	1917-S	1920	1925	1928-S
1917	1918	1920-D	1926	1929
1917-D	1918-D	1920-S	1926-D	1929-D
1917-S	1918-S	1921	1926-S	1929-S
Variety 2	1919	1923	1927	1930
1917	1919-D	1923-S	1927-D	1930-S



Standing Liberty Quarters

Issued 1916-1930

			1924	1927-S
			1924-D	1928
Variety 1	1917-D	1919-S	1924-S	1928-D
1916	1917-S	1920	1925	1928-S
1917	1918	1920-D	1926	1929
1917-D	1918-D	1920-S	1926-D	1929-D
1917-S	1918-S	1921	1926-S	1929-S
Variety 2	1919	1923	1927	1930
1917	1919-D	1923-S	1927-D	1930-S



Washington Quarters

Issued 1932-1998

Silver	1943	1953	1967	1984-D
1932	1943-D	1953-D	1968	1985-P
1932-D	1943-S	1953-S	1968-D	1985-D
1932-S	1944	1954	1969	1986-P
1934	1944-D	1954-D	1969-D	1986-D
1934-D	1944-S	1954-S	1970	1987-P
1935	1945	1955	1970-D	1987-D
1935-D	1945-D	1955-D	1971	1988-P
1935-S	1945-S	1956	1971-D	1988-D
1936	1946	1956-D	1972	1989-P
1936-D	1946-D	1957	1972-D	1989-D
1936-S	1946-S	1957-D	1973	1990-P
1937	1947	1958	1973-D	1990-D
1937-D	1947-D	1958-D	1974	1991-P
1937-S	1947-S	1959	1974-D	1991-D
1938	1948	1959-D	1976	1992-P
1938-S	1948-D	1960	1976-D	1992-D
1939	1948-S	1960-D	1977	1993-P
1939-D	1949	1961	1977-D	1993-D
1939-S	1949-D	1961-D	1978	1994-P
1940	1950	1962	1978-D	1994-D
1940-D	1950-D	1962-D	1979	1995-P
1940-S	1950-S	1963	1979-D	1995-D
1941	1951	1963-D	1980-P	1996-P
1941-D	1951-D	1964	1980-D	1996-D
1941-S	1951-S	1964-D	1981-P	1997-P
1942	1952	Clad	1981-D	1997-D
1942-D	1952-D	1965	1982-P	1998-P
1942-S	1952-S	1966	1982-D	1998-D
			1983-P	
			1983-D	
			1984-P	



Washington Quarters

Issued 1932-1998

Silver	1943	1953	1967	1984-D
1932	1943-D	1953-D	1968	1985-P
1932-D	1943-S	1953-S	1968-D	1985-D
1932-S	1944	1954	1969	1986-P
1934	1944-D	1954-D	1969-D	1986-D
1934-D	1944-S	1954-S	1970	1987-P
1935	1945	1955	1970-D	1987-D
1935-D	1945-D	1955-D	1971	1988-P
1935-S	1945-S	1956	1971-D	1988-D
1936	1946	1956-D	1972	1989-P
1936-D	1946-D	1957	1972-D	1989-D
1936-S	1946-S	1957-D	1973	1990-P
1937	1947	1958	1973-D	1990-D
1937-D	1947-D	1958-D	1974	1991-P
1937-S	1947-S	1959	1974-D	1991-D
1938	1948	1959-D	1976	1992-P
1938-S	1948-D	1960	1976-D	1992-D
1939	1948-S	1960-D	1977	1993-P
1939-D	1949	1961	1977-D	1993-D
1939-S	1949-D	1961-D	1978	1994-P
1940	1950	1962	1978-D	1994-D
1940-D	1950-D	1962-D	1979	1995-P
1940-S	1950-S	1963	1979-D	1995-D
1941	1951	1963-D	1980-P	1996-P
1941-D	1951-D	1964	1980-D	1996-D
1941-S	1951-S	1964-D	1981-P	1997-P
1942	1952	Clad	1981-D	1997-D
1942-D	1952-D	1965	1982-P	1998-P
1942-S	1952-S	1966	1982-D	1998-D
			1983-P	
			1983-D	
			1984-P	



Washington Quarters

Proof only issues

1968-S	1976-S Silver	1983-S	1993-S Silver
1969-S	1977-S	1984-S	1994-S
1970-S	1978-S	1985-S	1994-S Silver
1971-S	1979-S Filled S	1986-S	1995-S
1972-S	1979-S Clear S	1987-S	1995-S Silver
1973-S	1980-S	1988-S	1996-S
1974-S	1981-S	1989-S	1996-S Silver
1976-S CN	1982-S	1990-S	1997-S
		1991-S	1997-S Silver
		1992-S	1998-S
		1992-S Silver	1998-S Silver
		1993-S	



Statehood Quarters

Issued 1999-2008

1999-P Delaware	2000-D Maryland
1999-D Delaware	2000-P South Carolina
1999-P Pennsylvania	2000-D South Carolina
1999-D Pennsylvania	2000-P New Hampshire
1999-P New Jersey	2000-D New Hampshire
1999-D New Jersey	2000-P Virginia
1999-P New York	2000-D Virginia
1999-D New York	2001-P New York
1999-P North Carolina	2001-D New York
1999-D North Carolina	2001-P North Carolina
1999-P Rhode Island	2001-D North Carolina
1999-D Rhode Island	2001-P Rhode Island
1999-P Connecticut	2001-D Rhode Island
1999-D Connecticut	2001-P Vermont
2000-P Massachusetts	2001-D Vermont
2000-D Massachusetts	2001-P Kentucky
2000-P Maryland	2001-D Kentucky



Washington Quarters

Proof only issues

1968-S	1976-S Silver	1983-S	1993-S Silver
1969-S	1977-S	1984-S	1994-S
1970-S	1978-S	1985-S	1994-S Silver
1971-S	1979-S Filled S	1986-S	1995-S
1972-S	1979-S Clear S	1987-S	1995-S Silver
1973-S	1980-S	1988-S	1996-S
1974-S	1981-S	1989-S	1996-S Silver
1976-S CN	1982-S	1990-S	1997-S
		1991-S	1997-S Silver
		1992-S	1998-S
		1992-S Silver	1998-S Silver
		1993-S	



Statehood Quarters

Issued 1999-2008

1999-P Delaware	2000-D Maryland
1999-D Delaware	2000-P South Carolina
1999-P Pennsylvania	2000-D South Carolina
1999-D Pennsylvania	2000-P New Hampshire
1999-P New Jersey	2000-D New Hampshire
1999-D New Jersey	2000-P Virginia
1999-P New York	2000-D Virginia
1999-D New York	2001-P New York
1999-P North Carolina	2001-D New York
1999-D North Carolina	2001-P North Carolina
1999-P Rhode Island	2001-D North Carolina
1999-D Rhode Island	2001-P Rhode Island
1999-P Connecticut	2001-D Rhode Island
1999-D Connecticut	2001-P Vermont
2000-P Massachusetts	2001-D Vermont
2000-D Massachusetts	2001-P Kentucky
2000-P Maryland	2001-D Kentucky

Statehood Quarters continued

2002-P Tennessee	2005-P Oregon
2002-D Tennessee	2005-D Oregon
2002-P Ohio	2005-P Kansas
2002-D Ohio	2005-D Kansas
2002-P Louisiana	2005-P West Virginia
2002-D Louisiana	2005-D West Virginia
2002-P Indiana	2006-P Nevada
2002-D Indiana	2006-D Nevada
2002-P Mississippi	2006-P Nebraska
2002-D Mississippi	2006-D Nebraska
2003-P Illinois	2006-P Colorado
2003-D Illinois	2006-D Colorado
2003-P Alabama	2006-P North Dakota
2003-D Alabama	2006-D North Dakota
2003-P Maine	2006-P South Dakota
2003-D Maine	2006-D South Dakota
2003-P Missouri	2007-P Montana
2003-D Missouri	2007-D Montana
2003-P Arkansas	2007-P Washington
2003-D Arkansas	2007-D Washington
2004-P Michigan	2007-P Idaho
2004-D Michigan	2007-D Idaho
2004-P Florida	2007-P Wyoming
2004-D Florida	2007-D Wyoming
2004-P Texas	2007-P Utah
2004-D Texas	2007-D Utah
2004-P Iowa	2008-P Oklahoma
2004-D Iowa	2008-D Oklahoma
2004-P Wisconsin	2008-P New Mexico
2004-D Wisconsin	2008-D New Mexico
2004-D WI, Extra Leaf High	2008-P Arizona
2004-D WI, Extra Leaf Low	2008-D Arizona
2005-P California	2008-P Alaska
2005-D California	2008-D Alaska
2005-P Minnesota	2008-P Hawaii
2005-D Minnesota	2008-D Hawaii

Statehood Quarters continued

2002-P Tennessee	2005-P Oregon
2002-D Tennessee	2005-D Oregon
2002-P Ohio	2005-P Kansas
2002-D Ohio	2005-D Kansas
2002-P Louisiana	2005-P West Virginia
2002-D Louisiana	2005-D West Virginia
2002-P Indiana	2006-P Nevada
2002-D Indiana	2006-D Nevada
2002-P Mississippi	2006-P Nebraska
2002-D Mississippi	2006-D Nebraska
2003-P Illinois	2006-P Colorado
2003-D Illinois	2006-D Colorado
2003-P Alabama	2006-P North Dakota
2003-D Alabama	2006-D North Dakota
2003-P Maine	2006-P South Dakota
2003-D Maine	2006-D South Dakota
2003-P Missouri	2007-P Montana
2003-D Missouri	2007-D Montana
2003-P Arkansas	2007-P Washington
2003-D Arkansas	2007-D Washington
2004-P Michigan	2007-P Idaho
2004-D Michigan	2007-D Idaho
2004-P Florida	2007-P Wyoming
2004-D Florida	2007-D Wyoming
2004-P Texas	2007-P Utah
2004-D Texas	2007-D Utah
2004-P Iowa	2008-P Oklahoma
2004-D Iowa	2008-D Oklahoma
2004-P Wisconsin	2008-P New Mexico
2004-D Wisconsin	2008-D New Mexico
2004-D WI, Extra Leaf High	2008-P Arizona
2004-D WI, Extra Leaf Low	2008-D Arizona
2005-P California	2008-P Alaska
2005-D California	2008-D Alaska
2005-P Minnesota	2008-P Hawaii
2005-D Minnesota	2008-D Hawaii



Statehood Quarters

Proof only issues

1999-S Delaware
 1999-S Delaware Silver
 1999-S Pennsylvania
 1999-S Pennsylvania Silver
 1999-S New Jersey
 1999-S New Jersey Silver
 1999-S Georgia
 1999-S Georgia Silver
 1999-S Connecticut
 1999-S Connecticut Silver
 2000-S Massachusetts
 2000-S Massachusetts Silver
 2000-S Maryland
 2000-S Maryland Silver
 2000-S South Carolina
 2000-S South Carolina Silver
 2000-S New Hampshire
 2000-S New Hampshire Silver
 2000-S Virginia
 2000-S Virginia Silver
 2001-S New York
 2001-S New York Silver
 2001-S North Carolina
 2001-S North Carolina Silver
 2001-S Rhode Island
 2001-S Rhode Island Silver
 2001-S Vermont
 2001-S Vermont Silver
 2001-S Kentucky
 2001-S Kentucky Silver

2002-S Tennessee
 2002-S Tennessee Silver
 2002-S Ohio
 2002-S Ohio Silver
 2002-S Louisiana
 2002-S Louisiana Silver
 2002-S Indiana
 2002-S Indiana Silver
 2002-S Mississippi
 2002-S Mississippi Silver
 2003-S Illinois
 2003-S Illinois Silver
 2003-S Alabama
 2003-S Alabama Silver
 2003-S Maine
 2003-S Maine Silver
 2003-S Missouri
 2003-S Missouri Silver
 2003-S Arkansas
 2003-S Arkansas Silver
 2004-S Michigan
 2004-S Michigan Silver
 2004-S Florida
 2004-S Florida Silver
 2004-S Texas
 2004-S Texas Silver
 2004-S Iowa
 2004-S Iowa Silver
 2004-S Wisconsin
 2004-S Wisconsin Silver
 2005-S California
 2005-S California Silver
 2005-S Minnesota
 2005-S Minnesota Silver



Statehood Quarters

Proof only issues

1999-S Delaware
 1999-S Delaware Silver
 1999-S Pennsylvania
 1999-S Pennsylvania Silver
 1999-S New Jersey
 1999-S New Jersey Silver
 1999-S Georgia
 1999-S Georgia Silver
 1999-S Connecticut
 1999-S Connecticut Silver
 2000-S Massachusetts
 2000-S Massachusetts Silver
 2000-S Maryland
 2000-S Maryland Silver
 2000-S South Carolina
 2000-S South Carolina Silver
 2000-S New Hampshire
 2000-S New Hampshire Silver
 2000-S Virginia
 2000-S Virginia Silver
 2001-S New York
 2001-S New York Silver
 2001-S North Carolina
 2001-S North Carolina Silver
 2001-S Rhode Island
 2001-S Rhode Island Silver
 2001-S Vermont
 2001-S Vermont Silver
 2001-S Kentucky
 2001-S Kentucky Silver

2002-S Tennessee
 2002-S Tennessee Silver
 2002-S Ohio
 2002-S Ohio Silver
 2002-S Louisiana
 2002-S Louisiana Silver
 2002-S Indiana
 2002-S Indiana Silver
 2002-S Mississippi
 2002-S Mississippi Silver
 2003-S Illinois
 2003-S Illinois Silver
 2003-S Alabama
 2003-S Alabama Silver
 2003-S Maine
 2003-S Maine Silver
 2003-S Missouri
 2003-S Missouri Silver
 2003-S Arkansas
 2003-S Arkansas Silver
 2004-S Michigan
 2004-S Michigan Silver
 2004-S Florida
 2004-S Florida Silver
 2004-S Texas
 2004-S Texas Silver
 2004-S Iowa
 2004-S Iowa Silver
 2004-S Wisconsin
 2004-S Wisconsin Silver
 2005-S California
 2005-S California Silver
 2005-S Minnesota
 2005-S Minnesota Silver

Statehood Quarter Proofs continued

2005-S Oregon	2007-S Washington
2005-S Oregon Silver	2007-S Washington Silver
2005-S Kansas	2007-S Idaho
2005-S Kansas Silver	2007-S Idaho Silver
2005-S West Virginia	2007-S Wyoming
2005-S West Virginia Silver	2007-S Wyoming Silver
2006-S Nevada	2007-S Utah
2006-S Nevada Silver	2007-S Utah Silver
2006-S Nebraska	2008-S Oklahoma
2006-S Nebraska Silver	2008-S Oklahoma Silver
2006-S Colorado	2008-S New Mexico
2006-S Colorado Silver	2008-S New Mexico Silver
2006-S North Dakota	2008-S Arizona
2006-S North Dakota Silver	2008-S Arizona Silver
2006-S South Dakota	2008-S Alaska
2006-S South Dakota Silver	2008-S Alaska Silver
2007-S Montana	2008-S Hawaii
2007-S Montana Silver	2008-S Hawaii Silver

"My grandson started to collect coins when he was twelve years old. He is now a senior in college, and I have enjoyed collecting with him all these years, thanks to your organization."

A.E., Reading, PA



D.C. & U.S. Territories 2009

2009-P District of Columbia
2009-D District of Columbia
2009-P Puerto Rico
2009-D Puerto Rico

2009-P Guam
2009-D Guam
2009-P American Samoa
2009-D American Samoa
2009-P U.S. Virgin Islands
2009-D U.S. Virgin Islands
2009-P Northern Mariana Is.
2009-D Northern Mariana Is.

Statehood Quarter Proofs continued

2005-S Oregon	2007-S Washington
2005-S Oregon Silver	2007-S Washington Silver
2005-S Kansas	2007-S Idaho
2005-S Kansas Silver	2007-S Idaho Silver
2005-S West Virginia	2007-S Wyoming
2005-S West Virginia Silver	2007-S Wyoming Silver
2006-S Nevada	2007-S Utah
2006-S Nevada Silver	2007-S Utah Silver
2006-S Nebraska	2008-S Oklahoma
2006-S Nebraska Silver	2008-S Oklahoma Silver
2006-S Colorado	2008-S New Mexico
2006-S Colorado Silver	2008-S New Mexico Silver
2006-S North Dakota	2008-S Arizona
2006-S North Dakota Silver	2008-S Arizona Silver
2006-S South Dakota	2008-S Alaska
2006-S South Dakota Silver	2008-S Alaska Silver
2007-S Montana	2008-S Hawaii
2007-S Montana Silver	2008-S Hawaii Silver

"My grandson started to collect coins when he was twelve years old. He is now a senior in college, and I have enjoyed collecting with him all these years, thanks to your organization."

A.E., Reading, PA



D.C. & U.S. Territories 2009

2009-P District of Columbia
2009-D District of Columbia
2009-P Puerto Rico
2009-D Puerto Rico

2009-P Guam
2009-D Guam
2009-P American Samoa
2009-D American Samoa
2009-P U.S. Virgin Islands
2009-D U.S. Virgin Islands
2009-P Northern Mariana Is.
2009-D Northern Mariana Is.



D.C. & U.S. Territories

Proof only issues

2009-S District of Columbia
2009-S District of
Columbia Silver
2009-S Puerto Rico
2009-S Puerto Rico silver
2009-S Guam

2009-S Guam Silver
2009-S American Samoa
2009-S American Samoa Silver
2009-S U.S. Virgin Islands
2009-S U.S. Virgin
Islands Silver
2009-S Northern Mariana Is.
2009-S Northern
Mariana Is. Silver



National Parks

Issued 2010-2021

2010-P Hot Springs
2010-D Hot Springs
2010-P Yellowstone
2010-D Yellowstone
2010-P Yosemite
2010-D Yosemite
2010-P Grand Canyon
2010-D Grand Canyon
2010-P Mt. Hood
2010-D Mt. Hood
2011-P Gettysburg
2011-D Gettysburg
2011-P Glacier
2011-D Glacier
2011-P Olympic
2011-D Olympic
2011-P Vicksburg

2011-D Vicksburg
2011-P Chickasaw
2011-D Chickasaw
2012-P El Yunque
2012-D El Yunque
2012-P Chaco Culture
2012-D Chaco Culture
2012-P Acadia
2012-D Acadia
2012-P Hawai'i Volcanoes
2012-D Hawai'i Volcanoes
2012-P Denali
2012-D Denali
2013-P White Mountain
2013-D White Mountain
2013-P Perry's Peace Memorial
2013-D Perry's Peace Memorial
2013-P Great Basin
2013-D Great Basin
2013-P Fort McHenry
2013-D Fort McHenry



D.C. & U.S. Territories

Proof only issues

2009-S District of Columbia
2009-S District of
Columbia Silver
2009-S Puerto Rico
2009-S Puerto Rico Silver
2009-S Guam

2009-S Guam Silver
2009-S American Samoa
2009-S American Samoa Silver
2009-S U.S. Virgin Islands
2009-S U.S. Virgin
Islands Silver
2009-S Northern Mariana Is.
2009-S Northern
Mariana Is. Silver



National Parks

Issued 2010-2021

2010-P Hot Springs
2010-D Hot Springs
2010-P Yellowstone
2010-D Yellowstone
2010-P Yosemite
2010-D Yosemite
2010-P Grand Canyon
2010-D Grand Canyon
2010-P Mt. Hood
2010-D Mt. Hood
2011-P Gettysburg
2011-D Gettysburg
2011-P Glacier
2011-D Glacier
2011-P Olympic
2011-D Olympic
2011-P Vicksburg

2011-D Vicksburg
2011-P Chickasaw
2011-D Chickasaw
2012-P El Yunque
2012-D El Yunque
2012-P Chaco Culture
2012-D Chaco Culture
2012-P Acadia
2012-D Acadia
2012-P Hawai'i Volcanoes
2012-D Hawai'i Volcanoes
2012-P Denali
2012-D Denali
2013-P White Mountain
2013-D White Mountain
2013-P Perry's Peace Memorial
2013-D Perry's Peace Memorial
2013-P Great Basin
2013-D Great Basin
2013-P Fort McHenry
2013-D Fort McHenry

National Parks continued

2013-P Mount Rushmore
2013-D Mount Rushmore
2014-P Smoky Mountains
2014-D Smoky Mountains
2014-P Shenandoah
2014-D Shenandoah
2014-P Arches
2014-D Arches
2014-P Great Sand Dunes
2014-D Great Sand Dunes
2014-P Everglades
2014-D Everglades
2015-P Homestead
2015-D Homestead
2015-P Kisatchie
2015-D Kisatchie
2015-P Blue Ridge
2015-D Blue Ridge
2015-P Bombay Hook
2015-D Bombay Hook
2015-P Saratoga
2015-D Saratoga
2016-P Shawnee
2016-D Shawnee
2016-P Cumberland Gap
2016-D Cumberland Gap
2016-P Harpers Ferry
2016-D Harpers Ferry
2016-P Fort Moultrie/Sumter
2016-D Fort Moultrie/Sumter
2017-P Effigy Mounds
2017-D Effigy Mounds
2017-P Frederick Douglass
2017-D Frederick Douglass
2017-P Ozark Riverways
2017-D Ozark Riverways
2017-P Ellis Island

2017-D Ellis Island
2017-P George Rogers Clark
2017-D George Rogers Clark
2018-P Pictured Rocks
2018-D Pictured Rocks
2018-P Apostle Islands
2018-D Apostle Islands
2018-P Voyageurs
2018-D Voyageurs
2018-P Cumberland Island
2018-D Cumberland Island
2018-P Block Island
2018-D Block Island
2019-P Lowell
2019-D Lowell
2019-P American Memorial
2019-D American Memorial
2019-P War in the Pacific
2019-D War in the Pacific
2019-P San Antonio Missions
2019-D San Antonio Missions
2019-P Frank Church River
2019-D Frank Church River
2020-P NP of American Samoa
2020-D NP of American Samoa
2020-P Weir Farm
2020-D Weir Farm
2020-P Salt River Bay
2020-D Salt River Bay
2020-P Marsh-Billings-
Rockefeller
2020-D Marsh-Billings-
Rockefeller
2020-P Tallgrass Prairie
2020-D Tallgrass Prairie
2021-P Tuskegee Airmen
2021-D Tuskegee Airmen

National Parks continued

2013-P Mount Rushmore
2013-D Mount Rushmore
2014-P Smoky Mountains
2014-D Smoky Mountains
2014-P Shenandoah
2014-D Shenandoah
2014-P Arches
2014-D Arches
2014-P Great Sand Dunes
2014-D Great Sand Dunes
2014-P Everglades
2014-D Everglades
2015-P Homestead
2015-D Homestead
2015-P Kisatchie
2015-D Kisatchie
2015-P Blue Ridge
2015-D Blue Ridge
2015-P Bombay Hook
2015-D Bombay Hook
2015-P Saratoga
2015-D Saratoga
2016-P Shawnee
2016-D Shawnee
2016-P Cumberland Gap
2016-D Cumberland Gap
2016-P Harpers Ferry
2016-D Harpers Ferry
2016-P Fort Moultrie/Sumter
2016-D Fort Moultrie/Sumter
2017-P Effigy Mounds
2017-D Effigy Mounds
2017-P Frederick Douglass
2017-D Frederick Douglass
2017-P Ozark Riverways
2017-D Ozark Riverways
2017-P Ellis Island

2017-D Ellis Island
2017-P George Rogers Clark
2017-D George Rogers Clark
2018-P Pictured Rocks
2018-D Pictured Rocks
2018-P Apostle Islands
2018-D Apostle Islands
2018-P Voyageurs
2018-D Voyageurs
2018-P Cumberland Island
2018-D Cumberland Island
2018-P Block Island
2018-D Block Island
2019-P Lowell
2019-D Lowell
2019-P American Memorial
2019-D American Memorial
2019-P War in the Pacific
2019-D War in the Pacific
2019-P San Antonio Missions
2019-D San Antonio Missions
2019-P Frank Church River
2019-D Frank Church River
2020-P NP of American Samoa
2020-D NP of American Samoa
2020-P Weir Farm
2020-D Weir Farm
2020-P Salt River Bay
2020-D Salt River Bay
2020-P Marsh-Billings-
Rockefeller
2020-D Marsh-Billings-
Rockefeller
2020-P Tallgrass Prairie
2020-D Tallgrass Prairie
2021-P Tuskegee Airmen
2021-D Tuskegee Airmen



National Parks

Proof only issues

2010-S Hot Springs
2010-S Hot Springs Silver
2010-S Yellowstone
2010-S Yellowstone Silver
2010-S Yosemite
2010-S Yosemite Silver
2010-S Grand Canyon
2010-S Grand Canyon Silver
2010-S Mt. Hood
2010-S Mt. Hood Silver
2011-S Gettysburg
2011-S Gettysburg Silver
2011-S Glacier
2011-S Glacier Silver
2011-S Olympic
2011-S Olympic Silver
2011-S Vicksburg
2011-S Vicksburg Silver
2011-S Chickasaw
2011-S Chickasaw Silver
2012-S El Yunque
2012-S El Yunque Silver
2012-S Chaco Culture
2012-S Chaco Culture Silver
2012-S Acadia
2012-S Acadia Silver
2012-S Hawai'i Volcanoes
2012-S Hawai'i Volcanoes Silver
2012-S Denali

2012-S Denali Silver
2013-S White Mountain
2013-S White Mountain Silver
2013-S Perry's Peace Memorial
2013-S Perry's Peace Memorial Silver
2013-S Great Basin
2013-S Great Basin Silver
2013-S Fort McHenry
2013-S Fort McHenry Silver
2013-S Mount Rushmore
2013-S Mount Rushmore Silver
2014-S Smoky Mountains
2014-S Smoky Mountains Silver
2014-S Shenandoah
2014-S Shenandoah Silver
2014-S Arches
2014-S Arches Silver
2014-S Great Sand Dunes
2014-S Great Sand Dunes Silver
2014-S Everglades
2014-S Everglades Silver
2015-S Homestead
2015-S Homestead Silver
2015-S Kisatchie
2015-S Kisatchie Silver
2015-S Blue Ridge
2015-S Blue Ridge Silver
2015-S Bombay Hook
2015-S Bombay Hook Silver
2015-S Saratoga
2015-S Saratoga Silver



National Parks

Proof only issues

2010-S Hot Springs
2010-S Hot Springs Silver
2010-S Yellowstone
2010-S Yellowstone Silver
2010-S Yosemite
2010-S Yosemite Silver
2010-S Grand Canyon
2010-S Grand Canyon Silver
2010-S Mt. Hood
2010-S Mt. Hood Silver
2011-S Gettysburg
2011-S Gettysburg Silver
2011-S Glacier
2011-S Glacier Silver
2011-S Olympic
2011-S Olympic Silver
2011-S Vicksburg
2011-S Vicksburg Silver
2011-S Chickasaw
2011-S Chickasaw Silver
2012-S El Yunque
2012-S El Yunque Silver
2012-S Chaco Culture
2012-S Chaco Culture Silver
2012-S Acadia
2012-S Acadia Silver
2012-S Hawai'i Volcanoes
2012-S Hawai'i Volcanoes Silver
2012-S Denali

2012-S Denali Silver
2013-S White Mountain
2013-S White Mountain Silver
2013-S Perry's Peace Memorial
2013-S Perry's Peace Memorial Silver
2013-S Great Basin
2013-S Great Basin Silver
2013-S Fort McHenry
2013-S Fort McHenry Silver
2013-S Mount Rushmore
2013-S Mount Rushmore Silver
2014-S Smoky Mountains
2014-S Smoky Mountains Silver
2014-S Shenandoah
2014-S Shenandoah Silver
2014-S Arches
2014-S Arches Silver
2014-S Great Sand Dunes
2014-S Great Sand Dunes Silver
2014-S Everglades
2014-S Everglades Silver
2015-S Homestead
2015-S Homestead Silver
2015-S Kisatchie
2015-S Kisatchie Silver
2015-S Blue Ridge
2015-S Blue Ridge Silver
2015-S Bombay Hook
2015-S Bombay Hook Silver
2015-S Saratoga
2015-S Saratoga Silver

National Park Proofs continued

2016-S Shawnee
2016-S Shawnee Silver
2016-S Cumberland Gap
2016-S Cumberland Gap Silver
2016-S Harpers Ferry
2016-S Harpers Ferry Silver
2016-S Fort Moultrie/Sumter
2016-S Fort Moultrie/
Sumter Silver
2017-S Effigy Mounds
2017-S Effigy Mounds Silver
2017-S Frederick Douglass
2017-S Frederick Douglass Silver
2017-S Ozark Riverways
2017-S Ozark Riverways Silver
2017-S Ellis Island
2017-S Ellis Island Silver
2017-S George Rogers Clark
2017-S George Rogers
Clark Silver
2018-S Pictured Rocks
2018-S Pictured Rocks Silver
2018-S Apostle Island
2018-S Apostle Island Silver
2018-S Voyageurs
2018-S Voyageurs Silver
2018-S Cumberland Island
2018-S Cumberland Island Silver
2018-S Block Island

2018-S Block Island Silver
2019-S Lowell
2019-S Lowell Silver
2019-S American Memorial
2019-S American Memorial Silver
2019-S War in the Pacific
2019-S War in the
Pacific Silver
2019-S San Antonio Missions
2019-S San Antonio
Missions Silver
2019-S Frank Church River
2019-S Frank Church River Silver
2020-S NP of American Samoa
2020-S NP of American
Samoa Silver
2020-S Weir Farm
2020-S Weir Farm Silver
2020-S Salt River Bay
2020-S Salt River Bay Silver
2020-S Marsh-Billings-
Rockefeller Silver
2020-S Marsh-Billings-
Rockefeller Silver
2020-S Tallgrass Prairie
2020-S Tallgrass Prairie Silver
2021-S Tuskegee Airmen
2021-S Tuskegee Airmen Silver

National Park Proofs continued

2016-S Shawnee
2016-S Shawnee Silver
2016-S Cumberland Gap
2016-S Cumberland Gap Silver
2016-S Harpers Ferry
2016-S Harpers Ferry Silver
2016-S Fort Moultrie/Sumter
2016-S Fort Moultrie/
Sumter Silver
2017-S Effigy Mounds
2017-S Effigy Mounds Silver
2017-S Frederick Douglass
2017-S Frederick Douglass Silver
2017-S Ozark Riverways
2017-S Ozark Riverways Silver
2017-S Ellis Island
2017-S Ellis Island Silver
2017-S George Rogers Clark
2017-S George Rogers
Clark Silver
2018-S Pictured Rocks
2018-S Pictured Rocks Silver
2018-S Apostle Island
2018-S Apostle Island Silver
2018-S Voyageurs
2018-S Voyageurs Silver
2018-S Cumberland Island
2018-S Cumberland Island Silver
2018-S Block Island

2018-S Block Island Silver
2019-S Lowell
2019-S Lowell Silver
2019-S American Memorial
2019-S American Memorial Silver
2019-S War in the Pacific
2019-S War in the
Pacific Silver
2019-S San Antonio Missions
2019-S San Antonio
Missions Silver
2019-S Frank Church River
2019-S Frank Church River Silver
2020-S NP of American Samoa
2020-S NP of American
Samoa Silver
2020-S Weir Farm
2020-S Weir Farm Silver
2020-S Salt River Bay
2020-S Salt River Bay Silver
2020-S Marsh-Billings-
Rockefeller Silver
2020-S Marsh-Billings-
Rockefeller Silver
2020-S Tallgrass Prairie
2020-S Tallgrass Prairie Silver
2021-S Tuskegee Airmen
2021-S Tuskegee Airmen Silver

Littleton's 45-Day Money Back Guarantee

You must be completely satisfied with every purchase you make from Littleton. If not, simply return it within 45 days for a prompt exchange or refund, whichever you prefer.

Littleton's 45-Day Money Back Guarantee

You must be completely satisfied with every purchase you make from Littleton. If not, simply return it within 45 days for a prompt exchange or refund, whichever you prefer.



Early Half Dollars
Issued 1794-1839

Flowing Hair

- 1794
- 1795
- 1795 3 leaves under each wing
- 1795 Small Head
- Draped Bust**
- Small Eagle Reverse**
- 1796 15 Stars
- 1796 16 Stars
- 1797 15 Stars
- Draped Bust**
- Heraldic Eagle Reverse**
- 1801
- 1802
- 1803 Small 3
- 1803 Large 3
- 1805 5 over 4
- 1805
- 1806 6 over 5
- 1806 6 over inverted 6
- 1806 Knobbed 6, Large Stars
- 1806 Knobbed 6, Small Stars
- 1806 Knobbed 6, Stem not through claw
- 1806 Pointed 6, Stem through claw
- 1806 Pointed 6, Stem not through claw
- 1807
- Capped Bust, Lettered Edge**
- 1807 Small Stars
- 1807 Large Stars
- 1807 50 over 20

- 1808
- 1808 over 7
- 1809
- 1810
- 1811 Date 18.11, 11 over 10
- 1811 Small 8
- 1811 Large 8
- 1812 2 over 1, Small 8
- 1812 2 over 1, Large 8
- 1812
- 1813
- 1814
- 1814 4 over 3
- 1814 E over A
- 1815 5 over 2
- 1817
- 1817 7 over 3
- 1817 7 over 4
- 1817 Date 181.7
- 1818
- 1818 8 over 7
- 1819
- 1819 Small 9 over 8
- 1819 Large 9 over 8
- 1820 20 over 19
- 1820 Small Date
- 1820 Large Date
- 1821
- 1822
- 1823



Early Half Dollars
Issued 1794-1839

Flowing Hair

- 1794
- 1795
- 1795 3 leaves under each wing
- 1795 Small Head
- Draped Bust**
- Small Eagle Reverse**
- 1796 15 Stars
- 1796 16 Stars
- 1797 15 Stars
- Draped Bust**
- Heraldic Eagle Reverse**
- 1801
- 1802
- 1803 Small 3
- 1803 Large 3
- 1805 5 over 4
- 1805
- 1806 6 over 5
- 1806 6 over inverted 6
- 1806 Knobbed 6, Large Stars
- 1806 Knobbed 6, Small Stars
- 1806 Knobbed 6, Stem not through claw
- 1806 Pointed 6, Stem through claw
- 1806 Pointed 6, Stem not through claw
- 1807
- Capped Bust, Lettered Edge**
- 1807 Small Stars
- 1807 Large Stars
- 1807 50 over 20

- 1808
- 1808 over 7
- 1809
- 1810
- 1811 Date 18.11, 11 over 10
- 1811 Small 8
- 1811 Large 8
- 1812 2 over 1, Small 8
- 1812 2 over 1, Large 8
- 1812
- 1813
- 1814
- 1814 4 over 3
- 1814 E over A
- 1815 5 over 2
- 1817
- 1817 7 over 3
- 1817 7 over 4
- 1817 Date 181.7
- 1818
- 1818 8 over 7
- 1819
- 1819 Small 9 over 8
- 1819 Large 9 over 8
- 1820 20 over 19
- 1820 Small Date
- 1820 Large Date
- 1821
- 1822
- 1823

Early Half Dollars & Capped Bust Type continued

1823 Broken 3	1830 Large O in Date
1823 Patched 3	1831
1823 Ugly 3	1832
1824	1832 Large Letters
1824 over various dates	1833
1824 4 over 1	1834 Large Date, Large Letters
1825	1834 Large Date, Small Letters
1826	1834 Small Date, Stars, Letters
1827 7 over 6	1835
1827 Sq. Base 2	1836
1827 Curl Base 2	1836 over 1336
1828 Curl Base, No Knob 2	1836 50 over 00
1828 Curl Base, Knob 2	Capped Bust, Reeded Edge
1828 Large 8s, Sq. Base 2	1836
1828 Small 8s, Sq. Base 2, Large Letters	1837
1828 Small 8s, Sq. Base 2, Small Letters	1838
1829 9 over 7	1838-O
1829	1839
1830 Small O in Date	1839-O

Early Half Dollars & Capped Bust Type continued

1823 Broken 3	1830 Large O in Date
1823 Patched 3	1831
1823 Ugly 3	1832
1824	1832 Large Letters
1824 over various dates	1833
1824 4 over 1	1834 Large Date, Large Letters
1825	1834 Large Date, Small Letters
1826	1834 Small Date, Stars, Letters
1827 7 over 6	1835
1827 Sq. Base 2	1836
1827 Curl Base 2	1836 over 1336
1828 Curl Base, No Knob 2	1836 50 over 00
1828 Curl Base, Knob 2	Capped Bust, Reeded Edge
1828 Large 8s, Sq. Base 2	1836
1828 Small 8s, Sq. Base 2, Large Letters	1837
1828 Small 8s, Sq. Base 2, Small Letters	1838
1829 9 over 7	1838-O
1829	1839
1830 Small O in Date	1839-O



Liberty Seated Half Dollars Issued 1839-1891

Variety 1, No Motto Above Eagle

1839 No Drapery
1839 Drapery
1840 Small Letters
1840 Medium Letters
1840-O

1841

1841-O

1842-O Small Date,
Small Letters

Modified Reverse

1842 Small Date

1842 Medium Date

1842-O Medium Date

1843

1843-O

1844

1844-O

1845

1845-O

1845-O No Drapery

1846 Medium Date

1846 Tall Date

1846 over horizontal 6

1846-O Medium Date



Liberty Seated Half Dollars Issued 1839-1891

Variety 1, No Motto Above Eagle

1839 No Drapery
1839 Drapery
1840 Small Letters
1840 Medium Letters
1840-O

1841

1841-O

1842-O Small Date,
Small Letters

Modified Reverse

1842 Small Date

1842 Medium Date

1842-O Medium Date

1843

1843-O

1844

1844-O

1845

1845-O

1845-O No Drapery

1846 Medium Date

1846 Tall Date

1846 over horizontal 6

1846-O Medium Date

Early Half Dollars – Liberty Seated Type continued

1846-O Tall	1855-S	Variety 4,	1874-CC
Date	Variety 1	Motto Above	1874-S
1847	Resumed	Eagle	Variety 4
1847 7 over 6	1856	1866	Resumed
1847-O	1856-O	1866-S	1875
1848	1856-S	1867	1875-CC
1848-O	1857	1867-S	1875-S
1849	1857-O	1868	1876
1849-O	1857-S	1868-S	1876-CC
1850	1858	1869	1876-S
1850-O	1858-O	1869-S	1877
1851	1858-S	1870	1877-CC
1851-O	1859	1870-CC	1877-S
1852	1859-O	1870-S	1878
1852-O	1859-S	1871	1878-CC
Variety 2,	1860	1871-CC	1878-S
Arrows at	1860-O	1871-S	1879
date, Rays	1860-S	1872	1880
around	1861	1872-CC	1881
Eagle	1861-O	1872-S	1882
1853	1861-S	1873 Closed 3	1883
1853-O	1862	1873 Open 3	1884
Variety 3,	1862-S	1873-CC	1885
Arrows	1863	Variety 5,	1886
at Date, No	1863-S	Arrows	1887
Rays	1864	at Date	1888
1854	1864-S	1873	1889
1854-O	1865	1873-CC	1890
1855	1865-S	1873-S	1891
1855-O	1866-S	1874	

Early Half Dollars – Liberty Seated Type continued

1846-O Tall	1855-S	Variety 4,	1874-CC
Date	Variety 1	Motto Above	1874-S
1847	Resumed	Eagle	Variety 4
1847 7 over 6	1856	1866	Resumed
1847-O	1856-O	1866-S	1875
1848	1856-S	1867	1875-CC
1848-O	1857	1867-S	1875-S
1849	1857-O	1868	1876
1849-O	1857-S	1868-S	1876-CC
1850	1858	1869	1876-S
1850-O	1858-O	1869-S	1877
1851	1858-S	1870	1877-CC
1851-O	1859	1870-CC	1877-S
1852	1859-O	1870-S	1878
1852-O	1859-S	1871	1878-CC
Variety 2,	1860	1871-CC	1878-S
Arrows at	1860-O	1871-S	1879
date, Rays	1860-S	1872	1880
around	1861	1872-CC	1881
Eagle	1861-O	1872-S	1882
1853	1861-S	1873 Closed 3	1883
1853-O	1862	1873 Open 3	1884
Variety 3,	1862-S	1873-CC	1885
Arrows	1863	Variety 5,	1886
at Date, No	1863-S	Arrows	1887
Rays	1864	at Date	1888
1854	1864-S	1873	1889
1854-O	1865	1873-CC	1890
1855	1865-S	1873-S	1891
1855-O	1866-S	1874	



Barber Half Dollars

Issued 1892-1915

				1909-O
				1909-S
			1910	
		1905		1910-S
		1905-O		1911
		1905-S		1911-D
1892	1896-O	1900-S	1906	1911-S
1892-O	1896-S	1901	1906-D	1912
1892-S	1897	1901-O	1906-O	1912-D
1893	1897-O	1901-S	1906-S	1912-S
1893-O	1897-S	1902	1907	1913
1893-S	1898	1902-O	1907-D	1913-D
1894	1898-O	1902-S	1907-O	1913-S
1894-O	1898-S	1903	1907-S	1914
1894-S	1899	1903-O	1908	1914-S
1895	1899-O	1903-S	1908-D	1915
1895-O	1899-S	1904	1908-O	1915-D
1895-S	1900	1904-O	1908-S	1915-S
1896	1900-O	1904-S	1909	



Barber Half Dollars

Issued 1892-1915

				1909-O
				1909-S
			1910	
		1905		1910-S
		1905-O		1911
		1905-S		1911-D
1892	1896-O	1900-S	1906	1911-S
1892-O	1896-S	1901	1906-D	1912
1892-S	1897	1901-O	1906-O	1912-D
1893	1897-O	1901-S	1906-S	1912-S
1893-O	1897-S	1902	1907	1913
1893-S	1898	1902-O	1907-D	1913-D
1894	1898-O	1902-S	1907-O	1913-S
1894-O	1898-S	1903	1907-S	1914
1894-S	1899	1903-O	1908	1914-S
1895	1899-O	1903-S	1908-D	1915
1895-O	1899-S	1904	1908-O	1915-D
1895-S	1900	1904-O	1908-S	1915-S
1896	1900-O	1904-S	1909	



Liberty Walking Half Dollars

Issued 1916-1947

				1919-D
				1919-S
			1920	1929-D
			1920-D	1929-S
			1920-S	1933-S
			1921	1934
1916	1917-D on Obv.	1918		1934-D
1916-D on Obv.	1917-D on Rev.	1918-D		1934-S
1916-S on Obv.	1917-S on Obv.	1918-S		
1917	1917-S on Rev.	1919		1923-S



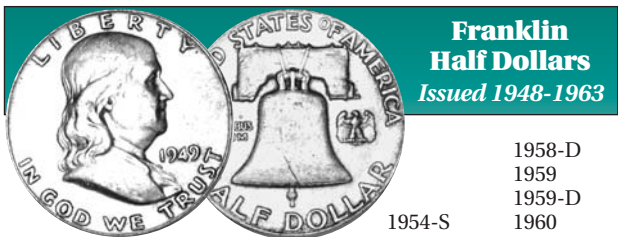
Liberty Walking Half Dollars

Issued 1916-1947

				1919-D
				1919-S
			1920	1929-D
			1920-D	1929-S
			1920-S	1933-S
			1921	1934
1916	1917-D on Obv.	1918		1934-D
1916-D on Obv.	1917-D on Rev.	1918-D		1934-S
1916-S on Obv.	1917-S on Obv.	1918-S		
1917	1917-S on Rev.	1919		1923-S

Liberty Walking Half Dollar continued

1935	1937-S	1941	1943-S	1946-D
1935-D	1938	1941-D	1944	1946-S
1935-S	1938-D	1941-S	1944-D	1947
1936	1939	1942	1944-S	1947-D
1936-D	1939-D	1942-D	1945	
1936-S	1939-S	1942-S	1945-D	
1937	1940	1943	1945-S	
1937-D	1940-S	1943-D	1946	



**Franklin
Half Dollars**
Issued 1948-1963

			1954-S	1958-D
			1955	1959
			1955	1959-D
1948	1950-D	1952-S	1955	1960
1948-D	1951	1953	Bugs Bunny	1960-D
1949	1951-D	1953-D	1956	1961
1949-D	1951-S	1953-S	1957	1961-D
1949-S	1952	1954	1957-D	1962
1950	1952-D	1954-D	1958	1962-D
				1963
				1963-D



**Kennedy
Half Dollars**
Issued 1964-Date

Silver			Silver Clad	
	1964	1964-D	1965	
			1966	
			1967	
			1968-D	
			1969-D	

Liberty Walking Half Dollar continued

1935	1937-S	1941	1943-S	1946-D
1935-D	1938	1941-D	1944	1946-S
1935-S	1938-D	1941-S	1944-D	1947
1936	1939	1942	1944-S	1947-D
1936-D	1939-D	1942-D	1945	
1936-S	1939-S	1942-S	1945-D	
1937	1940	1943	1945-S	
1937-D	1940-S	1943-D	1946	



**Franklin
Half Dollars**
Issued 1948-1963

			1954-S	1958-D
			1955	1959
			1955	1959-D
1948	1950-D	1952-S	1955	1960
1948-D	1951	1953	Bugs Bunny	1960-D
1949	1951-D	1953-D	1956	1961
1949-D	1951-S	1953-S	1957	1961-D
1949-S	1952	1954	1957-D	1962
1950	1952-D	1954-D	1958	1962-D
				1963
				1963-D



**Kennedy
Half Dollars**
Issued 1964-Date

Silver			Silver Clad	
	1964	1964-D	1965	
			1966	
			1967	
			1968-D	
			1969-D	

Kennedy Half Dollars continued

1970-D	1981-D	1993-D	2005-D*
Copper-Nickel Clad	1982-P	1994-P	2006-P*
1971	1982-D	1994-D	2006-D*
1971-D	1983-P	1995-P	2007-P*
1972	1983-D	1995-D	2007-D*
1972-D	1984-P	1996-P	2008-P*
1973	1984-D	1996-D	2008-D*
1973-D	1985-P	1997-P	2009-P*
1974	1985-D	1997-D	2009-D*
1974-D	1986-P	1998-P	2010-P*
1976	1986-D	1998-D	2010-D*
1976-D	1987-P*	1999-P	2011-P*
1976-S	1987-D*	1999-D	2011-D*
Silver Clad	1988-P	2000-P	2012-P*
1977	1988-D	2000-D	2012-D*
1977-D	1989-P	2001-P*	2013-P*
1978	1989-D	2001-D	2013-D*
1978-D	1990-P	2002-P*	2014-P*
1979	1990-D	2002-D*	2014-D*
1979-D	1991-P	2003-P*	2015-P*
1980-P	1991-D	2003-D*	2015-D*
1980-D	1992-P	2004-P*	2016-P*
1981-P	1992-D	2004-D*	2016-D*
	1993-P	2005-P*	

*Not released for general circulation

Kennedy Half Dollars continued

1970-D	1981-D	1993-D	2005-D*
Copper-Nickel Clad	1982-P	1994-P	2006-P*
1971	1982-D	1994-D	2006-D*
1971-D	1983-P	1995-P	2007-P*
1972	1983-D	1995-D	2007-D*
1972-D	1984-P	1996-P	2008-P*
1973	1984-D	1996-D	2008-D*
1973-D	1985-P	1997-P	2009-P*
1974	1985-D	1997-D	2009-D*
1974-D	1986-P	1998-P	2010-P*
1976	1986-D	1998-D	2010-D*
1976-D	1987-P*	1999-P	2011-P*
1976-S	1987-D*	1999-D	2011-D*
Silver Clad	1988-P	2000-P	2012-P*
1977	1988-D	2000-D	2012-D*
1977-D	1989-P	2001-P*	2013-P*
1978	1989-D	2001-D	2013-D*
1978-D	1990-P	2002-P*	2014-P*
1979	1990-D	2002-D*	2014-D*
1979-D	1991-P	2003-P*	2015-P*
1980-P	1991-D	2003-D*	2015-D*
1980-D	1992-P	2004-P*	2016-P*
1981-P	1992-D	2004-D*	2016-D*
	1993-P	2005-P*	

*Not released for general circulation



Kennedy Half Dollars
Proof only issues

		1980-S	
		1981-S	
		1982-S	
		1983-S	
		1984-S	
1968-S	1972-S	1977-S	1985-S
1969-S	1973-S	1978-S	1986-S
1970-S	1974-S	1979-S Filled S	1987-S
1971-S	1976-S CN Clad	1979-S Clear S	1988-S



Kennedy Half Dollars
Proof only issues

		1980-S	
		1981-S	
		1982-S	
		1983-S	
		1984-S	
1968-S	1972-S	1977-S	1985-S
1969-S	1973-S	1978-S	1986-S
1970-S	1974-S	1979-S Filled S	1987-S
1971-S	1976-S CN Clad	1979-S Clear S	1988-S

Kennedy Half Dollar Proofs continued

1989-S	1997-S Silver	2004-S Silver	2011-S Silver
1990-S	1998-S	2005-S	2012-S
1991-S	1998-S Silver	2005-S Silver	2012-S Silver
1992-S	1999-S	2006-S	2013-S
1992-S Silver	1999-S Silver	2006-S Silver	2013-S Silver
1993-S	2000-S	2007-S	2014-S
1993-S Silver	2000-S Silver	2007-S Silver	2014-S Silver
1994-S	2001-S	2008-S	2015-S
1994-S Silver	2001-S Silver	2008-S Silver	2015-S Silver
1995-S	2002-S	2009-S	2016-S
1995-S Silver	2002-S Silver	2009-S Silver	2016-S Silver
1996-S	2003-S	2010-S	
1996-S Silver	2003-S Silver	2010-S Silver	
1997-S	2004-S	2011-S	

Kennedy Half Dollar Proofs continued

1989-S	1997-S Silver	2004-S Silver	2011-S Silver
1990-S	1998-S	2005-S	2012-S
1991-S	1998-S Silver	2005-S Silver	2012-S Silver
1992-S	1999-S	2006-S	2013-S
1992-S Silver	1999-S Silver	2006-S Silver	2013-S Silver
1993-S	2000-S	2007-S	2014-S
1993-S Silver	2000-S Silver	2007-S Silver	2014-S Silver
1994-S	2001-S	2008-S	2015-S
1994-S Silver	2001-S Silver	2008-S Silver	2015-S Silver
1995-S	2002-S	2009-S	2016-S
1995-S Silver	2002-S Silver	2009-S Silver	2016-S Silver
1996-S	2003-S	2010-S	
1996-S Silver	2003-S Silver	2010-S Silver	
1997-S	2004-S	2011-S	



Bust Dollars

Issued
1794-1803

Draped Bust, Heraldic Eagle

1798
1799
1800
1801
1802
1803

Flowing Hair

1794
1795 Two Leaves
1795 Three Leaves

Draped Bust Small Eagle

1797
1798
1795
1796



Bust Dollars

Issued
1794-1803

Draped Bust, Heraldic Eagle

1798
1799
1800
1801
1802
1803

Flowing Hair

1794
1795 Two Leaves
1795 Three Leaves

Draped Bust Small Eagle

1797
1798
1795
1796

"I have enjoyed every selection of coins that I have received. Keep up the good work – I'm looking forward to collecting with you in the years ahead."

M.W., Lorton, VA

"I have enjoyed every selection of coins that I have received. Keep up the good work – I'm looking forward to collecting with you in the years ahead."

M.W., Lorton, VA



Liberty Seated Dollars

Issued
1840-1873

1840	1848	1859
1841	1849	1859-O
1842	1850	1859-S
1843	1850-O	1860
1844	1853	1860-O
1845	1854	1861
1846	1855	1862
1846-O	1856	1863
1847	1857	1864

1865
Motto Added to Reverse
1866
1867
1868
1869
1870
1870-CC
1871
1871-CC
1872
1872-CC
1872-S
1873
1873-CC



Trade Dollars

Issued 1873-1885

1873	1874-CC	1875-S
1873-CC	1874-S	1876
1873-S	1875	1876-CC
1874	1875-CC	1876-S

1877
1877-CC
1877-S
1878
1878-CC
1878-S
1879
1880
1881
1882
1883



Liberty Seated Dollars

Issued
1840-1873

1840	1848	1859
1841	1849	1859-O
1842	1850	1859-S
1843	1850-O	1860
1844	1853	1860-O
1845	1854	1861
1846	1855	1862
1846-O	1856	1863
1847	1857	1864

1865
Motto Added to Reverse
1866
1867
1868
1869
1870
1870-CC
1871
1871-CC
1872
1872-CC
1872-S
1873
1873-CC



Trade Dollars

Issued 1873-1885

1873	1874-CC	1875-S
1873-CC	1874-S	1876
1873-S	1875	1876-CC
1874	1875-CC	1876-S

1877
1877-CC
1877-S
1878
1878-CC
1878-S
1879
1880
1881
1882
1883



Morgan Dollars

Issued
1878-1921

1878 8 Tail Feathers	1883	1890	1897-O
1878 7 Tail Feathers	1883-CC	1890-CC	1897-S
over 8 Tail Feathers	1883-O	1890-O	1898
1878 7 Tail Feathers	1883-S	1890-S	1898-O
1878-CC	1884	1891	1898-S
1878-S	1884-CC	1891-CC	1899
1879	1884-O	1891-O	1899-O
1879-CC	1884-S	1891-S	1900
1879-O	1885	1892	1900-O
1879-S Second	1885-CC	1892-CC	1900-S
Reverse	1885-O	1892-O	1901
1879-S Third	1885-S	1892-S	1901-O
Reverse	1886	1893	1901-S
1880	1886-O	1893-CC	1902
1880-CC Third	1886-S	1893-O	1902-O
Reverse	1887	1893-S	1902-S
1880-O	1887-O	1894	1903
1880-S	1887-S	1894-O	1903-O
1881	1888	1894-S	1903-S
1881-CC	1888-O	1895-O	1904
1881-O	1888-S	1895-S	1904-O
1881-S	1889	1896	1904-S
1882	1889-CC	1896-O	1921
1882-CC	1889-O	1896-S	1921-D
1882-O	1889-S	1897	1921-S
1882-S			



Morgan Dollars

Issued
1878-1921

1878 8 Tail Feathers	1883	1890	1897-O
1878 7 Tail Feathers	1883-CC	1890-CC	1897-S
over 8 Tail Feathers	1883-O	1890-O	1898
1878 7 Tail Feathers	1883-S	1890-S	1898-O
1878-CC	1884	1891	1898-S
1878-S	1884-CC	1891-CC	1899
1879	1884-O	1891-O	1899-O
1879-CC	1884-S	1891-S	1900
1879-O	1885	1892	1900-O
1879-S Second	1885-CC	1892-CC	1900-S
Reverse	1885-O	1892-O	1901
1879-S Third	1885-S	1892-S	1901-O
Reverse	1886	1893	1901-S
1880	1886-O	1893-CC	1902
1880-CC Third	1886-S	1893-O	1902-O
Reverse	1887	1893-S	1902-S
1880-O	1887-O	1894	1903
1880-S	1887-S	1894-O	1903-O
1881	1888	1894-S	1903-S
1881-CC	1888-O	1895-O	1904
1881-O	1888-S	1895-S	1904-O
1881-S	1889	1896	1904-S
1882	1889-CC	1896-O	1921
1882-CC	1889-O	1896-S	1921-D
1882-O	1889-S	1897	1921-S
1882-S			



Peace Dollars
Issued
1921-1935

1921	1923	1924-S	1926-D	1934-D
1922	1923-D	1925	1926-S	1934-S
1922-D	1923-S	1925-S	1927	1935
1922-S	1924	1926	1927-D	1935-S

1927-S
 1928
 1928-S
 1934



Peace Dollars
Issued
1921-1935

1921	1923	1924-S	1926-D	1934-D
1922	1923-D	1925	1926-S	1934-S
1922-D	1923-S	1925-S	1927	1935
1922-S	1924	1926	1927-D	1935-S

1927-S
 1928
 1928-S
 1934



Eisenhower Dollars
Issued
1971-1978

1971	1973-S Proof	1976-D Variety I
1971-D	1973-S Silver	1976-D Variety II
1971-S Silver	1973-S Silver Proof	1976-S Variety I Proof
1971-S Silver Proof	1974	1976-S Variety II Proof
1972	1974-D	1976-S Silver
1972-D	1974-S Proof	1976-S Silver Proof
1972-S Silver	1974-S Silver	1977
1972-S Silver Proof	1974-S Silver Proof	1977-D
1973	1976 Variety I	1977-S Proof
1973-D	1976 Variety II	1978
		1978-D
		1978-S Proof



Eisenhower Dollars
Issued
1971-1978

1971	1973-S Proof	1976-D Variety I
1971-D	1973-S Silver	1976-D Variety II
1971-S Silver	1973-S Silver Proof	1976-S Variety I Proof
1971-S Silver Proof	1974	1976-S Variety II Proof
1972	1974-D	1976-S Silver
1972-D	1974-S Proof	1976-S Silver Proof
1972-S Silver	1974-S Silver	1977
1972-S Silver Proof	1974-S Silver Proof	1977-D
1973	1976 Variety I	1977-S Proof
1973-D	1976 Variety II	1978
		1978-D
		1978-S Proof



**Susan B. Anthony
Dollars**
Issued 1979-1981, 1999

1979-P Far Date
1979-P Near Date
1979-D
1979-S
1979-S Proof Filled S

1979-S Proof Clear S
1980-P
1980-D
1980-S
1980-S Proof

1981-P
1981-D
1981-S
1981-S Proof
1999-P
1999-P Proof
1999-D



**Sacagawea
Dollars**
Issued 2000-2008

2000-P
2000-D
2001-P
2001-D
2002-P*
2002-D*
2003-P*
2003-D*

2004-P*
2004-D*
2005-P*
2005-D*
2006-P*
2006-D*

2007-P
2007-D
2008-P
2008-D
*Not released for
general circulation



**Sacagawea
Dollars**
Proof only issues

2000-S
2001-S

2002-S
2003-S
2004-S
2005-S
2006-S
2007-S
2008-S



**Susan B. Anthony
Dollars**
Issued 1979-1981, 1999

1979-P Far Date
1979-P Near Date
1979-D
1979-S
1979-S Proof Filled S

1979-S Proof Clear S
1980-P
1980-D
1980-S
1980-S Proof

1981-P
1981-D
1981-S
1981-S Proof
1999-P
1999-P Proof
1999-D



**Sacagawea
Dollars**
Issued 2000-2008

2000-P
2000-D
2001-P
2001-D
2002-P*
2002-D*
2003-P*
2003-D*

2004-P*
2004-D*
2005-P*
2005-D*
2006-P*
2006-D*

2007-P
2007-D
2008-P
2008-D
*Not released for
general circulation



**Sacagawea
Dollars**
Proof only issues

2000-S
2001-S

2002-S
2003-S
2004-S
2005-S
2006-S
2007-S
2008-S



Native American Dollars

Issued 2009-Date

Three Sisters

2009-P
2009-D

Great Law

2010-P
2010-D

Wampanoag Treaty

2011-P
2011-D

Trade Routes

2012-P
2012-D

2013-P
2013-D
2014-P
2014-D

2015-P
2015-D
2016-P
2016-D



Native American Dollars

Proof only issues

Three Sisters

2009-S

Great Law

2010-S

Wampanoag Treaty

2011-S
2012-S

2013-S
2014-S
2015-S
2016-S



Presidential Dollars

Issued 2007-Date

2007-P George Washington
2007-D George Washington

2007-P John Adams
2007-D John Adams
2007-P Thomas Jefferson
2007-D Thomas Jefferson



Native American Dollars

Issued 2009-Date

Three Sisters

2009-P
2009-D

Great Law

2010-P
2010-D

Wampanoag Treaty

2011-P
2011-D

Trade Routes

2012-P
2012-D

2013-P
2013-D
2014-P
2014-D

2015-P
2015-D
2016-P
2016-D



Native American Dollars

Proof only issues

Three Sisters

2009-S

Great Law

2010-S

Wampanoag Treaty

2011-S
2012-S

2013-S
2014-S
2015-S
2016-S



Presidential Dollars

Issued 2007-Date

2007-P George Washington
2007-D George Washington

2007-P John Adams
2007-D John Adams
2007-P Thomas Jefferson
2007-D Thomas Jefferson

Presidential Dollars continued

2007-P James Madison
2007-D James Madison
2008-P James Monroe
2008-D James Monroe
2008-P John Quincy Adams
2008-D John Quincy Adams
2008-P Andrew Jackson
2008-D Andrew Jackson
2008-P Martin Van Buren
2008-D Martin Van Buren
2009-P William Harrison
2009-D William Harrison
2009-P John Tyler
2009-D John Tyler
2009-P James Polk
2009-D James Polk
2009-P Zachary Taylor
2009-D Zachary Taylor
2010-P Millard Fillmore
2010-D Millard Fillmore
2010-P Franklin Pierce
2010-D Franklin Pierce
2010-P James Buchanan
2010-D James Buchanan
2010-P Abraham Lincoln
2010-D Abraham Lincoln
2011-P Andrew Johnson
2011-D Andrew Johnson
2011-P Ulysses Grant
2011-D Ulysses Grant
2011-P Rutherford Hayes
2011-D Rutherford Hayes
2011-P James Garfield
2011-D James Garfield
2012-P Chester Arthur
2012-D Chester Arthur
2012-P Grover Cleveland
2012-D Grover Cleveland
2013-P William McKinley
2013-D William McKinley
2013-P Theodore Roosevelt
2013-D Theodore Roosevelt
2013-P William Taft
2013-D William Taft
2013-P Woodrow Wilson
2013-D Woodrow Wilson
2014-P Warren Harding
2014-D Warren Harding
2014-P Calvin Coolidge
2014-D Calvin Coolidge
2014-P Herbert Hoover
2014-D Herbert Hoover
2014-P Franklin Roosevelt
2014-D Franklin Roosevelt
2015-P Harry Truman
2015-D Harry Truman
2015-P Dwight Eisenhower
2015-D Dwight Eisenhower
2015-P John Kennedy
2015-D John Kennedy
2015-P Lyndon Johnson
2015-D Lyndon Johnson
2016-P Richard Nixon
2016-D Richard Nixon
2016-P Gerald Ford
2016-D Gerald Ford
2016-P Ronald Reagan
2016-D Ronald Reagan

Presidential Dollars continued

2007-P James Madison
2007-D James Madison
2008-P James Monroe
2008-D James Monroe
2008-P John Quincy Adams
2008-D John Quincy Adams
2008-P Andrew Jackson
2008-D Andrew Jackson
2008-P Martin Van Buren
2008-D Martin Van Buren
2009-P William Harrison
2009-D William Harrison
2009-P John Tyler
2009-D John Tyler
2009-P James Polk
2009-D James Polk
2009-P Zachary Taylor
2009-D Zachary Taylor
2010-P Millard Fillmore
2010-D Millard Fillmore
2010-P Franklin Pierce
2010-D Franklin Pierce
2010-P James Buchanan
2010-D James Buchanan
2010-P Abraham Lincoln
2010-D Abraham Lincoln
2011-P Andrew Johnson
2011-D Andrew Johnson
2011-P Ulysses Grant
2011-D Ulysses Grant
2011-P Rutherford Hayes
2011-D Rutherford Hayes
2011-P James Garfield
2011-D James Garfield
2012-P Chester Arthur
2012-D Chester Arthur
2012-P Grover Cleveland
2012-D Grover Cleveland
2013-P William McKinley
2013-D William McKinley
2013-P Theodore Roosevelt
2013-D Theodore Roosevelt
2013-P William Taft
2013-D William Taft
2013-P Woodrow Wilson
2013-D Woodrow Wilson
2014-P Warren Harding
2014-D Warren Harding
2014-P Calvin Coolidge
2014-D Calvin Coolidge
2014-P Herbert Hoover
2014-D Herbert Hoover
2014-P Franklin Roosevelt
2014-D Franklin Roosevelt
2015-P Harry Truman
2015-D Harry Truman
2015-P Dwight Eisenhower
2015-D Dwight Eisenhower
2015-P John Kennedy
2015-D John Kennedy
2015-P Lyndon Johnson
2015-D Lyndon Johnson
2016-P Richard Nixon
2016-D Richard Nixon
2016-P Gerald Ford
2016-D Gerald Ford
2016-P Ronald Reagan
2016-D Ronald Reagan



Presidential Dollars

Proof Only Issues

2007-S George Washington
2007-S John Adams
2007-S Thomas Jefferson
2007-S James Madison
2008-S James Monroe
2008-S John Quincy Adams
2008-S Andrew Jackson
2008-S Martin Van Buren
2009-S William Harrison
2009-S John Tyler
2009-S James Polk
2009-S Zachary Taylor
2010-S Millard Fillmore
2010-S Franklin Pierce
2010-S James Buchanan
2010-S Abraham Lincoln
2011-S Andrew Johnson
2011-S Ulysses Grant
2011-S Rutherford Hayes

2011-S James Garfield
2012-S Chester Arthur
2012-S Grover Cleveland
2013-S William McKinley
2013-S Theodore Roosevelt
2013-S William Taft
2013-S Woodrow Wilson
2014-S Warren Harding
2014-S Calvin Coolidge
2014-S Herbert Hoover
2014-S Franklin Roosevelt
2015-S Harry Truman
2015-S Dwight Eisenhower
2015-S John Kennedy
2015-S Lyndon Johnson
2016-S Richard Nixon
2016-S Gerald Ford
2016-S Ronald Reagan



Presidential Dollars

Proof Only Issues

2007-S George Washington
2007-S John Adams
2007-S Thomas Jefferson
2007-S James Madison
2008-S James Monroe
2008-S John Quincy Adams
2008-S Andrew Jackson
2008-S Martin Van Buren
2009-S William Harrison
2009-S John Tyler
2009-S James Polk
2009-S Zachary Taylor
2010-S Millard Fillmore
2010-S Franklin Pierce
2010-S James Buchanan
2010-S Abraham Lincoln
2011-S Andrew Johnson
2011-S Ulysses Grant
2011-S Rutherford Hayes

2011-S James Garfield
2012-S Chester Arthur
2012-S Grover Cleveland
2013-S William McKinley
2013-S Theodore Roosevelt
2013-S William Taft
2013-S Woodrow Wilson
2014-S Warren Harding
2014-S Calvin Coolidge
2014-S Herbert Hoover
2014-S Franklin Roosevelt
2015-S Harry Truman
2015-S Dwight Eisenhower
2015-S John Kennedy
2015-S Lyndon Johnson
2016-S Richard Nixon
2016-S Gerald Ford
2016-S Ronald Reagan

Silver American Eagles

Issued 1986-Date



1986	2007-W*		
1987	2008		
1988	2008-W*		
1989	2009	1989-S	2008-W
1990	2009-W*	1990-S	2009-W
1991	2010	1991-S	2010-W
1992	2010-W*	1992-S	2011-W
1993	2011	1993-P	2012-W
1994	2011-W*	1994-P	2013-W
1995	2012	1995-P	2014-W
1996	2012-W*	1995-W	2015-W
1997	2013	1996-P	2016-W
1998	2013-W*	1997-P	
1999	2014	1998-P	
2000	2014-W*	1999-P	
2001	2015	2000-P	
2002	2015-W*	2001-W	
2003	2016	2002-W	
2004	2016-W*	2003-W	
2005	Proofs	2004-W	
2006	1986-S	2005-W	
2006-W*	1987-S	2006-W	
2007	1988-S	2007-W	

* Struck at the West Point Mint using specially burnished coin planchets.

Silver American Eagles

Issued 1986-Date



1986	2007-W*		
1987	2008		
1988	2008-W*		
1989	2009	1989-S	2008-W
1990	2009-W*	1990-S	2009-W
1991	2010	1991-S	2010-W
1992	2010-W*	1992-S	2011-W
1993	2011	1993-P	2012-W
1994	2011-W*	1994-P	2013-W
1995	2012	1995-P	2014-W
1996	2012-W*	1995-W	2015-W
1997	2013	1996-P	2016-W
1998	2013-W*	1997-P	
1999	2014	1998-P	
2000	2014-W*	1999-P	
2001	2015	2000-P	
2002	2015-W*	2001-W	
2003	2016	2002-W	
2004	2016-W*	2003-W	
2005	Proofs	2004-W	
2006	1986-S	2005-W	
2006-W*	1987-S	2006-W	
2007	1988-S	2007-W	

* Struck at the West Point Mint using specially burnished coin planchets.

Silver, Clad, Prestige & Premier Proof Sets



Early Silver Proof Sets

1950
1951
1952
1953
1954
1955 (Flat Pack)
1956
1957
1958
1959
1960 (Lg. Date)
1960 (Sm. Date)
1961
1962
1963
1964
1976 (40% silver)
Proof Sets
1968-S Clad
1969-S Clad
1970-S Clad
1971-S Clad
1972-S Clad
1973-S Clad

1974-S Clad
1975-S Clad
1976-S Clad
1977-S Clad
1978-S Clad
1979-S Clad
1980-S Clad
1981-S Clad
1982-S Clad
1983-S Clad
1983-S Prestige
1984-S Clad
1984-S Prestige
1985-S Clad
1986-S Clad
1986-S Prestige
1987-S Clad
1987-S Prestige
1988-S Clad
1988-S Prestige
1989-S Clad
1989-S Prestige
1990-S Clad
1990-S Prestige
1991-S Clad
1991-S Prestige

1992-S Clad
1992-S Prestige
1992-S Silver
1992-S Silver Premier
1993-S Clad
1993-S Prestige
1993-S Silver
1993-S Silver Premier
1994-S Clad
1994-S Prestige
1994-S Silver
1994-S Silver Premier
1995-S Clad
1995-S Prestige
1995-S Silver
1995-S Silver Premier
1996-S Clad
1996-S Prestige
1996-S Silver
1996-S Silver Premier
1997-S Clad

1997-S Prestige
1997-S Silver
1997-S Silver Premier
1998-S Clad
1998-S Silver
1998-S Silver Premier
1999-S 9 coin
1999-S Silver 9 coin
2000-S 10 coin
2000-S Silver 10 coin
2001-S 10 coin
2001-S Silver 10 coin
2002-S 10 coin
2002-S Silver 10 coin
2003-S 10 coin
2003-S Silver 10 coin
2004-S 11 coin
2004-S Silver 11 coin
2005-S 11 coin
2005-S Silver 11 coin
2006-S 11 coin

Silver, Clad, Prestige & Premier Proof Sets



Early Silver Proof Sets

1950
1951
1952
1953
1954
1955 (Flat Pack)
1956
1957
1958
1959
1960 (Lg. Date)
1960 (Sm. Date)
1961
1962
1963
1964
1976 (40% silver)
Proof Sets
1968-S Clad
1969-S Clad
1970-S Clad
1971-S Clad
1972-S Clad
1973-S Clad

1974-S Clad
1975-S Clad
1976-S Clad
1977-S Clad
1978-S Clad
1979-S Clad
1980-S Clad
1981-S Clad
1982-S Clad
1983-S Clad
1983-S Prestige
1984-S Clad
1984-S Prestige
1985-S Clad
1986-S Clad
1986-S Prestige
1987-S Clad
1987-S Prestige
1988-S Clad
1988-S Prestige
1989-S Clad
1989-S Prestige
1990-S Clad
1990-S Prestige
1991-S Clad
1991-S Prestige

1992-S Clad
1992-S Prestige
1992-S Silver
1992-S Silver Premier
1993-S Clad
1993-S Prestige
1993-S Silver
1993-S Silver Premier
1994-S Clad
1994-S Prestige
1994-S Silver
1994-S Silver Premier
1995-S Clad
1995-S Prestige
1995-S Silver
1995-S Silver Premier
1996-S Clad
1996-S Prestige
1996-S Silver
1996-S Silver Premier
1997-S Clad

1997-S Prestige
1997-S Silver
1997-S Silver Premier
1998-S Clad
1998-S Silver
1998-S Silver Premier
1999-S 9 coin
1999-S Silver 9 coin
2000-S 10 coin
2000-S Silver 10 coin
2001-S 10 coin
2001-S Silver 10 coin
2002-S 10 coin
2002-S Silver 10 coin
2003-S 10 coin
2003-S Silver 10 coin
2004-S 11 coin
2004-S Silver 11 coin
2005-S 11 coin
2005-S Silver 11 coin
2006-S 11 coin

Proof Sets continued

2006-S Silver 11 coin	2010-S 14 coin	2013-S Silver
2007-S 14 coin	2010-S Silver 14 coin	2014-S
2007-S Silver 14 coin	2011-S 14 coin	2014-S Silver
2008-S 14 coin	2011-S Silver 14 coin	2015-S
2008-S Silver 14 coin	2012-S	2015-S Silver
2009-S 18 coin	2012-S Silver	2016-S
2009-S Silver 18 coin	2013-S	2016-S Silver

Proof Sets continued

2006-S Silver 11 coin	2010-S 14 coin	2013-S Silver
2007-S 14 coin	2010-S Silver 14 coin	2014-S
2007-S Silver 14 coin	2011-S 14 coin	2014-S Silver
2008-S 14 coin	2011-S Silver 14 coin	2015-S
2008-S Silver 14 coin	2012-S	2015-S Silver
2009-S 18 coin	2012-S Silver	2016-S
2009-S Silver 18 coin	2013-S	2016-S Silver



Uncirculated Mint Sets

1958 P&D	1971 PDS	1985 P&D	2001 P&D 20 coin
1959 P&D	1972 PDS	1986 P&D	2002 P&D 20 coin
1960 P&D	1973 PDS	1987 P&D	2003 P&D 20 coin
1961 P&D	1974 PDS	1988 P&D	2004 P&D 22 coin
1962 P&D	1975 P&D	1989 P&D	2005 P&D 22 coin
1963 P&D	1776-1976	1990 P&D	2006 P&D 22 coin
1964 P&D	1976 P&D	1991 P&D	2007 P&D 28 coin
1965*	1977 P&D	1992 P&D	2008 P&D 28 coin
1966*	1978 P&D	1993 P&D	2009 P&D 36 coin
1967*	1979 P&D	1994 P&D	2010 P&D 28 coin
1968 PDS	1980 PDS	1995 P&D	2011 P&D 28 coin
1969 PDS	1981 PDS	1996 P&D	2012 P&D
1970 PDS	1984 P&D	1997 P&D	2013 P&D
		plus W Dime	2014 P&D
		1998 P&D	2015 P&D
		1999 P&D 18 coin	2016 P&D
		2000 P&D 20 coin	

*Extra-high-quality "Special Mint Sets" were issued during 1965-67. These have only 5 coins because U.S. coins were struck only at Philadelphia those years.

Note: The U.S. Mint did not produce Uncirculated Mint Sets during 1982 or 1983.



Uncirculated Mint Sets

1958 P&D	1971 PDS	1985 P&D	2001 P&D 20 coin
1959 P&D	1972 PDS	1986 P&D	2002 P&D 20 coin
1960 P&D	1973 PDS	1987 P&D	2003 P&D 20 coin
1961 P&D	1974 PDS	1988 P&D	2004 P&D 22 coin
1962 P&D	1975 P&D	1989 P&D	2005 P&D 22 coin
1963 P&D	1776-1976	1990 P&D	2006 P&D 22 coin
1964 P&D	1976 P&D	1991 P&D	2007 P&D 28 coin
1965*	1977 P&D	1992 P&D	2008 P&D 28 coin
1966*	1978 P&D	1993 P&D	2009 P&D 36 coin
1967*	1979 P&D	1994 P&D	2010 P&D 28 coin
1968 PDS	1980 PDS	1995 P&D	2011 P&D 28 coin
1969 PDS	1981 PDS	1996 P&D	2012 P&D
1970 PDS	1984 P&D	1997 P&D	2013 P&D
		plus W Dime	2014 P&D
		1998 P&D	2015 P&D
		1999 P&D 18 coin	2016 P&D
		2000 P&D 20 coin	

*Extra-high-quality "Special Mint Sets" were issued during 1965-67. These have only 5 coins because U.S. coins were struck only at Philadelphia those years.

Note: The U.S. Mint did not produce Uncirculated Mint Sets during 1982 or 1983.



Early U.S. Commemoratives

Alabama
Albany
Antietam
Arkansas 1935, D, S; 1936, D, S;
1937, D, S; 1938, D, S; 1939, D, S
Bay Bridge
Boone 1935, D, S; 1936, D, S; 1937, D, S;
1938, D, S
Bridgeport
California
Carver-Washington
Cincinnati 1936, D, S
Cleveland
Columbia, S.C. 1936, D, S
Columbian 1892, 1893
Connecticut
Delaware
Elgin
Gettysburg
Grant
Hawaiian
Hudson, NY
Huguenot
Illinois
Iowa
Isabella
Lafayette

Lexington
Long Island
Lynchburg
Maine
Maryland
Missouri
Monroe
New Rochelle
Norfolk
Oregon Trail 1926, S; 1928; 1933, D;
1934, D; 1936; 1936, S; 1937, D;
1938, D, S; 1939, D, S
Panama-Pacific
Pilgrim 1920, 1921
Rhode Island 1936, D, S
Roanoke
Robinson
San Diego 1935, S; 1936, D, S
Sesquicentennial
of America
Spanish Trail
Stone Mountain
Texas 1934; 1935, D, S; 1936, D, S;
1937, D, S; 1938, D, S
Vancouver
Vermont
Booker T. Washington 1946, D, S;
1947, D, S; 1948, D, S; 1949, D, S;
1950, D, S; 1951, D, S
George Washington
Wisconsin
York



Early U.S. Commemoratives

Alabama
Albany
Antietam
Arkansas 1935, D, S; 1936, D, S;
1937, D, S; 1938, D, S; 1939, D, S
Bay Bridge
Boone 1935, D, S; 1936, D, S; 1937, D, S;
1938, D, S
Bridgeport
California
Carver-Washington
Cincinnati 1936, D, S
Cleveland
Columbia, S.C. 1936, D, S
Columbian 1892, 1893
Connecticut
Delaware
Elgin
Gettysburg
Grant
Hawaiian
Hudson, NY
Huguenot
Illinois
Iowa
Isabella
Lafayette

Lexington
Long Island
Lynchburg
Maine
Maryland
Missouri
Monroe
New Rochelle
Norfolk
Oregon Trail 1926, S; 1928; 1933, D;
1934, D; 1936; 1936, S; 1937, D;
1938, D, S; 1939, D, S
Panama-Pacific
Pilgrim 1920, 1921
Rhode Island 1936, D, S
Roanoke
Robinson
San Diego 1935, S; 1936, D, S
Sesquicentennial
of America
Spanish Trail
Stone Mountain
Texas 1934; 1935, D, S; 1936, D, S;
1937, D, S; 1938, D, S
Vancouver
Vermont
Booker T. Washington 1946, D, S;
1947, D, S; 1948, D, S; 1949, D, S;
1950, D, S; 1951, D, S
George Washington
Wisconsin
York



Modern U.S. Commemoratives

1996 National Community Service

1982 George Washington	1996 Smithsonian Institution
1983 Los Angeles Olympiad	1997 Botanic Gardens
1984 Olympic Coliseum	1997 Jackie Robinson
1986 Statue of Liberty	1997 Franklin D. Roosevelt
1987 U.S. Constitution	1997 National Law Enforcement Memorial
1988 Olympiad	1998 Robert F. Kennedy
1989 Congress Bicentennial	1998 Black Revolutionary War Patriots
1990 Eisenhower Centennial	1999 Dolley Madison
1991 Mount Rushmore	1999 George Washington
1991 Korean War Memorial	1999 Yellowstone National Park
1991 U.S.O. 50th Anniversary	2000 Library of Congress Bicentennial
1992 XXV Olympiad	2000 Leif Ericson Millennium
1992 White House 200th Anniv.	2001 American Buffalo
1992 Columbus	2001 Capitol Visitor Center
1993 Bill of Rights	2002 Salt Lake City Olympic Games
1993 World War II	2002 West Point Bicentennial
1993 Thomas Jefferson	2003 First Flight Centennial
1994 World Cup	2004 Thomas Alva Edison
1994 Vietnam Veterans Memorial	2004 Lewis & Clark Bicentennial
1994 U.S. POWs	2005 Chief Justice John Marshall
1994 Women Veterans	2005 Marine Corps 230th Anniv.
1994 U.S. Capitol Bicentennial	2006 Benjamin Franklin
1995 Civil War Battlefields	2007 Jamestown 400th Anniv.
1995 Centennial Olympic Games	2007 Little Rock Central High School Desegregation
1995 Special Olympics World Games	
1996 Centennial Olympic Games	



Modern U.S. Commemoratives

1996 National Community Service

1982 George Washington	1996 Smithsonian Institution
1983 Los Angeles Olympiad	1997 Botanic Gardens
1984 Olympic Coliseum	1997 Jackie Robinson
1986 Statue of Liberty	1997 Franklin D. Roosevelt
1987 U.S. Constitution	1997 National Law Enforcement Memorial
1988 Olympiad	1998 Robert F. Kennedy
1989 Congress Bicentennial	1998 Black Revolutionary War Patriots
1990 Eisenhower Centennial	1999 Dolley Madison
1991 Mount Rushmore	1999 George Washington
1991 Korean War Memorial	1999 Yellowstone National Park
1991 U.S.O. 50th Anniversary	2000 Library of Congress Bicentennial
1992 XXV Olympiad	2000 Leif Ericson Millennium
1992 White House 200th Anniv.	2001 American Buffalo
1992 Columbus	2001 Capitol Visitor Center
1993 Bill of Rights	2002 Salt Lake City Olympic Games
1993 World War II	2002 West Point Bicentennial
1993 Thomas Jefferson	2003 First Flight Centennial
1994 World Cup	2004 Thomas Alva Edison
1994 Vietnam Veterans Memorial	2004 Lewis & Clark Bicentennial
1994 U.S. POWs	2005 Chief Justice John Marshall
1994 Women Veterans	2005 Marine Corps 230th Anniv.
1994 U.S. Capitol Bicentennial	2006 Benjamin Franklin
1995 Civil War Battlefields	2007 Jamestown 400th Anniv.
1995 Centennial Olympic Games	2007 Little Rock Central High School Desegregation
1995 Special Olympics World Games	
1996 Centennial Olympic Games	

Modern U.S. Commemoratives continued

2008 Bald Eagle
2009 Louis Braille
2009 Abraham Lincoln
2010 American Veterans
 Disabled for Life
2010 Boy Scouts of America
2011 Medal of Honor
2011 U.S. Army
2012 Star-Spangled Banner
2012 Infantry Soldier

Modern U.S. Commemoratives continued

2008 Bald Eagle
2009 Louis Braille
2009 Abraham Lincoln
2010 American Veterans
 Disabled for Life
2010 Boy Scouts of America
2011 Medal of Honor
2011 U.S. Army
2012 Star-Spangled Banner
2012 Infantry Soldier

Profit Shares – a Littleton exclusive

Every time you make a purchase with Littleton, you will earn 10 Profit Shares for each dollar you spend on merchandise. You can redeem them for FREE coins, paper money and collecting supplies. It's a terrific way to stretch your collecting budget, available only from Littleton.

For a FREE *Profit Share Wish Book*, call our friendly Customer Service staff toll free at 1-800-645-3122, from 7:30 A.M. to 9:00 P.M. eastern time, Monday-Friday.

Profit Shares – a Littleton exclusive

Every time you make a purchase with Littleton, you will earn 10 Profit Shares for each dollar you spend on merchandise. You can redeem them for FREE coins, paper money and collecting supplies. It's a terrific way to stretch your collecting budget, available only from Littleton.

For a FREE *Profit Share Wish Book*, call our friendly Customer Service staff toll free at 1-800-645-3122, from 7:30 A.M. to 9:00 P.M. eastern time, Monday-Friday.

Littleton Coin Company's Mission

***Throughout the ages,
coin collecting has provided
relaxation and the excitement of
history you can hold in your hand!***

***Littleton Coin Company
makes it fun and easy to enjoy
the numismatic hobby. We strive
to consistently meet and exceed
our customers' expectations by
providing world-class service
and quality products.***

Littleton Coin Company's Mission

***Throughout the ages,
coin collecting has provided
relaxation and the excitement of
history you can hold in your hand!***

***Littleton Coin Company
makes it fun and easy to enjoy
the numismatic hobby. We strive
to consistently meet and exceed
our customers' expectations by
providing world-class service
and quality products.***

Notes

Notes

Notes

Notes

Customer Information

Please fill out the information below and return to Littleton Coin Company, LLC, 1309 Mt. Eustis Road, Littleton NH 03561-3735

Customer Number _____

Mr./Mrs./Ms. _____

Address _____

City _____ State _____ Zip _____ - _____

Telephone (_____) _____ - _____

E-Mail Address _____

Best time to call me: mornings _____ evenings _____

Help us get to know you better...

Occupation _____

Age under 18 19-24 25-34 35-44 45-54 55+

I've been collecting coins for _____ years and have approximately _____ coins in my collection.

Coin albums I now own _____

Thank you for taking the time to complete this information.

Notes



Littleton
Coin Company.®

1309 Mt. Eustis Road, Littleton, NH 03561-3735

1-800-645-3122

LittletonCoin.com

America's Favorite Coin Source • Trusted Since 1945